

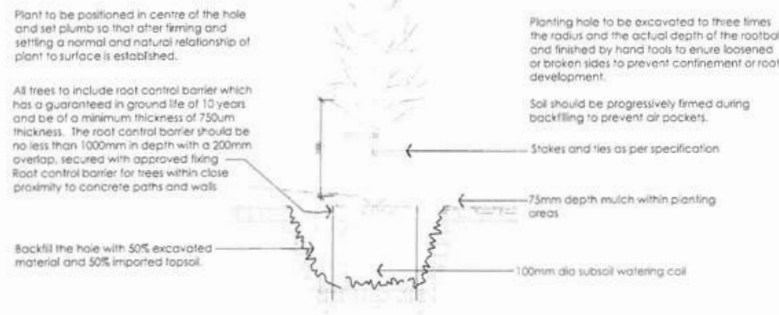
**Philosophy**

The masterplan for Wynyard Street Tumut aims to:

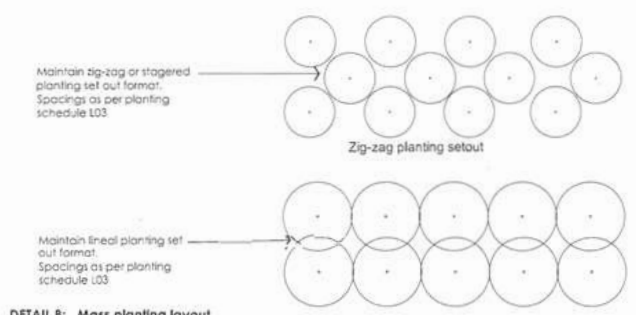
- Provide a vibrant and unique landscape which reflects Tumut
- Incorporate colour, texture and more plantings to help define the focal areas and intersections of the main street.
- Be respectful of the unique architectural character of Wynyard Street.
- Recognise the Aboriginal history of the site as a relevant meeting place.
- Build on the existing streetscape elements and incorporate opportunities for art/ sculpture which reflects the character of Tumut and its association with its Festival of the Falling Leaf.
- Connect the entire main street through varied and thematic plantings that provide an experience and hierarchy of planting from one end to the other.

**Legend-Refers to all sheets**

- Paving**  
To proposed park area. 400 x 400mm concrete pavers
- Paving**  
Header course to building facade. 400 x 400mm concrete pavers
- Contrast hard surface area**  
Contrasting concrete areas with varying texture and 'fossil leaf' imprints
- Permeable paving**  
Permeable paving equal to StoneSet
- Decomposed granite**  
To roundabouts and where shown.
- Planting areas**  
Planting areas and future planting areas as per indicative list
- Existing pedestrian railings**  
To be retained
- Existing Streetlight**  
To be retained - repaint
- Existing bins**  
To be replaced
- Proposed Seating**
- Existing seating** - Upgrade
- Existing trees**
- Sculpture by local artist**  
Sculpture to reflect falling leaves and the trees of Tumut
- Additional fencing**  
Additional fencing to match existing
- Planting to base of street trees**
- Proposed evergreen trees**  
Refer to notes and planting schedule for species
- Proposed deciduous trees**  
Refer to notes and planting schedule for species
- Leaf seats to main pedestrian crossing**  
Refer to detail - Custom local
- Bollards**  
Refer to detail
- Signage relating to historical buildings**
- Pergola structure with deciduous vines**



**DETAIL A: Advanced tree planting in grass or garden bed scale:1:5**



**DETAIL B: Mass planting layout scale:1:5**



**DETAIL D: Existing fence scale:1:5**

**TUMUT MAIN ST PLANT SCHEDULE- Fitzroy to Capper**

Trees Symbol	Species	HxW	Common name
AdB	Acer Autumn Blaze	13 x 10m	Red Maple
Ea	Eucalyptus albens	15 x 10m	White box
ES	Eucalyptus scoparia	12 x 8m	Willow gum
FR	Fraxinus raywood	12x8m	Claret Ash
LN	Lagerstroemia 'Natchez'	6 x 6m	Crape myrtle
NS	Nyssa sylvatica	11x6m	Tupelo
SS	Sapinum sebiferum	8x3m	Silky Oak tree
GR	Grevillea robusta	-	Silky Oak tree
UP	Ulmus parvifolia	12 x 10m	Chinese Elm
PC	Pistacia chinensis	6 x 5m	Chinese Pistachio
PSF	Populus simonii Fastigiata	12 x 4m	Simons poplar
PCS	Prunus cerasifera 'Crimson Spire'	6 x 4m	Purple leaf plum
PN	Prunus cerasifera Nigra	4 x 4m	Purple leaf plum

**Shrubs, perennials and ground covers**

Symbol	Species	Spacing	Size	HxW	Flower Colour	Flowering time	Type	Foliage Colour
Aq	Allium giganteum	300mm	140mm	800 x 300mm	Violet	Early summer, for 2-3 weeks	Perennial	Grey-green
AH	Anemone Honorine Jobert	300mm	140mm	300mm x 400mm	White	Late Summer to early Autumn	Perennial	Dark green
Ao	Agapanthus orientalis	300mm	140mm	300 x 300mm	Lavender /blue	Late spring through to summer	Evergreen	Dark green
BRG	Berberis Rosy Glow	800mm	140mm	800 x 500mm	Pale yellow	Summer to Autumn	Deciduous	Purple red
Cc	Clivia sp.	400mm	140mm	400x400mm	Bright red fruit autumn	Bright red fruit autumn	Evergreen	Bright green
Ckr	Coprosma Karo Red	1.0m	200mm	1.2m x 800mm	No flower	-	Evergreen	Black-red/purple-red in Winter
Cg	Canna generalis President	300mm	140mm	500mmx 300mm	Yellow with red	Summer to Autumn	Perennial	Striped green and deep burgundy
DJ	Dichella utopia	400mm	Tube	400 x 300mm	Purple berries	-	Evergreen	Dark green/Blue purple
Ef	Echinops filia	400mm	Tube	400 x 300mm	violet blue	-	Perennial	Silvery blue foliage
Ek	Eremophila 'kalbarri carpe'	1m	Tube	Prostrate x 1.5m	Tubular yellow	Spring and Summer	Evergreen	Silvery grey
HC	Heuchera Chocolate Ruffles	400mm	140mm	300mmx 400mm	White bell shaped	-	Evergreen	Dark chocolate-purple
Hlw	Hardenbergia 'Flat white'	800mm	140mm	0.1 x 2m	White or mauve	Late Winter to late Spring	Evergreen	Dark green
Kwc	Kniphofia 'Winter Cheer'	300mm	140mm	400 x 400mm	Orange	-	Evergreen	Dark green
Lj	Lavandula intermedia 'Grosso'	600mm	Tube	600 x 600	Deep purple	Spring or Summer	Perennial	Dark green
Lp	Lophomyrtus ralphii Pixie	500mm	140mm	1.0 x 0.8m	Small white, with dark red berries	Summer	Evergreen	Deep red/purple
Mp	Myoporum 'Pink'	800mm	Tube	Prostrate x 1m	White/pale pink with purple spots	Late spring to early Autumn	Evergreen	Silvery grey
Pn	Papaver nudicaule (Poppies)	By seed	By seed	400x400mm	Red	Spring	Annual	Green
Rb	Rhaphiolepis ballerina	600mm	140mm	600 x 1.0m	Bright pink	Winter and Spring for 8-10 weeks	Evergreen	Dark green
Ra	Rosmarinus officinalis 'Rosea'	400mm	140mm	600 x 400mm	Light pink	-	Evergreen	Mid-green
Sc	Santolina chamaecyparissus	400mm	140mm	200 x 300mm	Bright yellow	Summer	Evergreen	Silvery grey
Hsd	Hemerocallis stella D'ora	400mm	140mm	300 x 300mm	Yellow	Spring to Autumn	Perennial	Dark green
Ta	Trachelospermum asiaticum	600mm	140mm	1.0 x 5m	White	Summer	Evergreen	Dark green foliage
Tf	Teucrium fruticans	700mm	140mm	1.0 x 1m	Blue	Early to late summer	Evergreen	Blue-grey

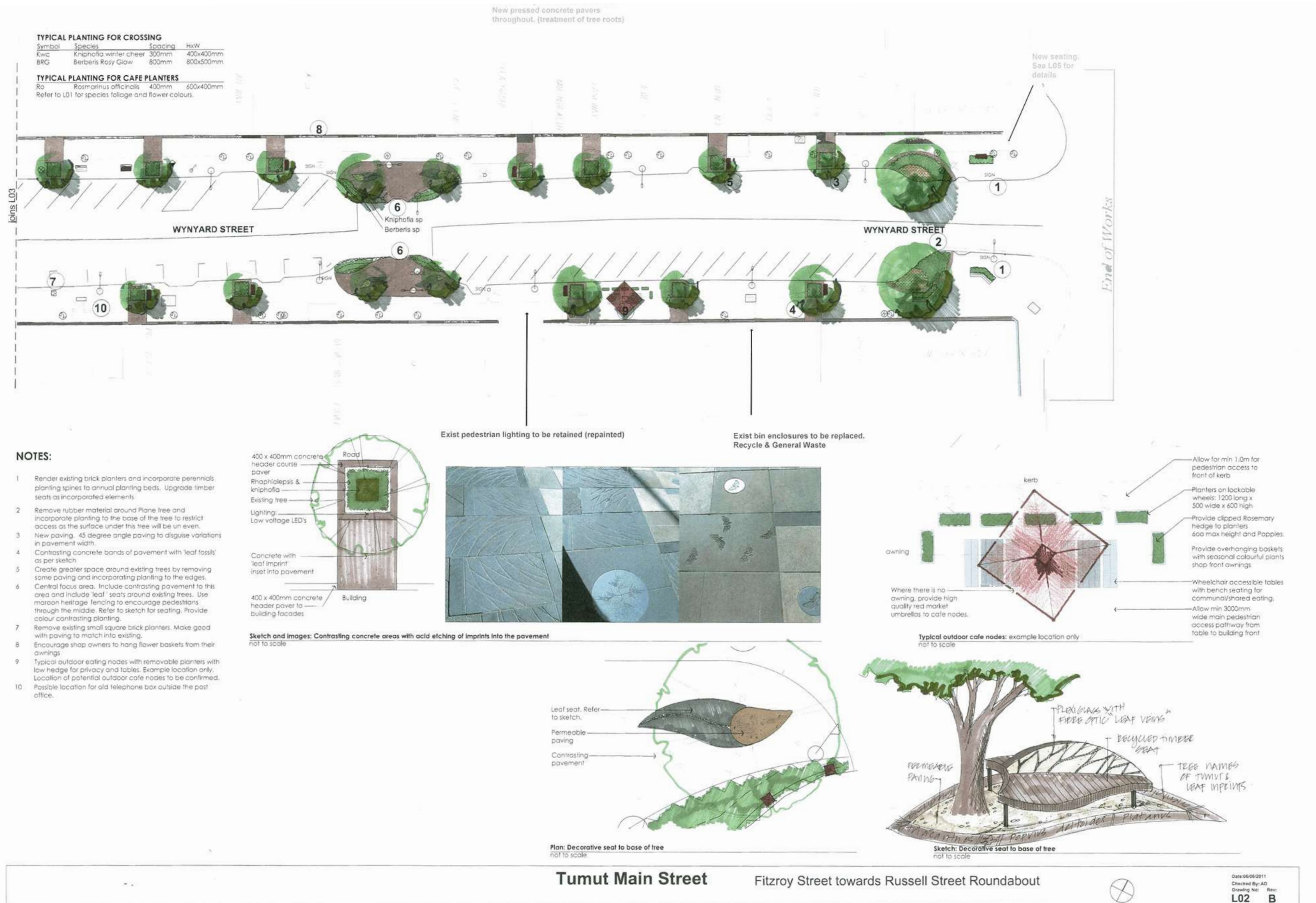
**Tumut Main Street**



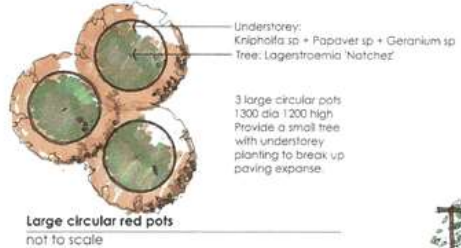
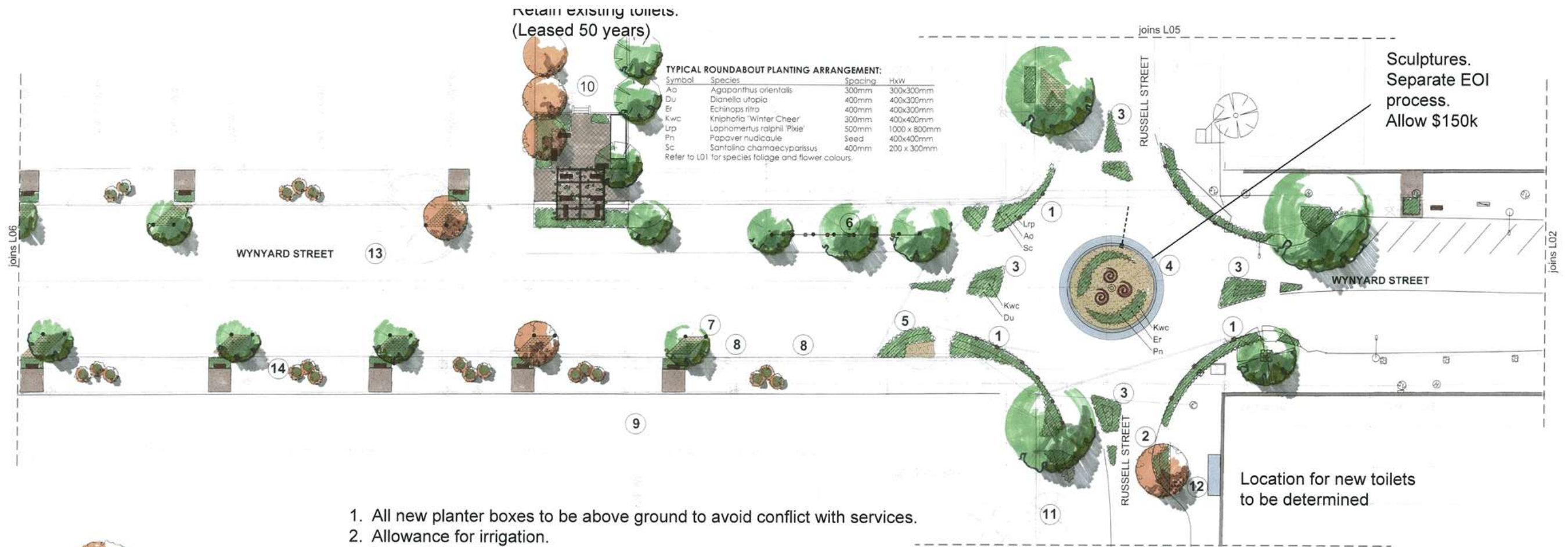
33

Checked By: AD  
Drawing No: L01  
Rev: B



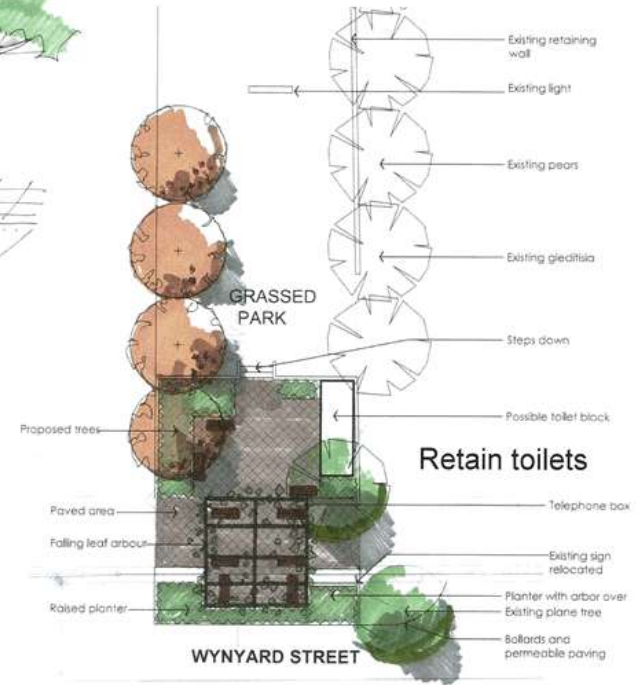
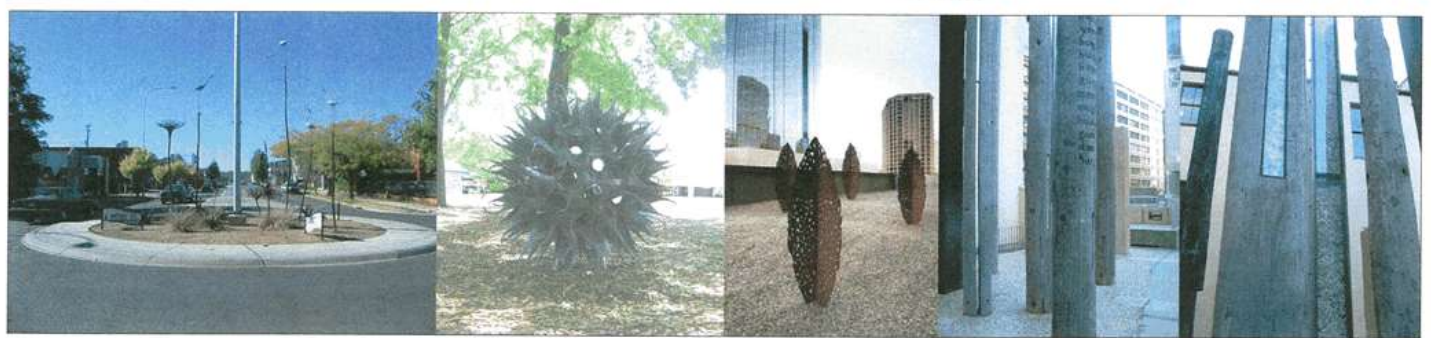
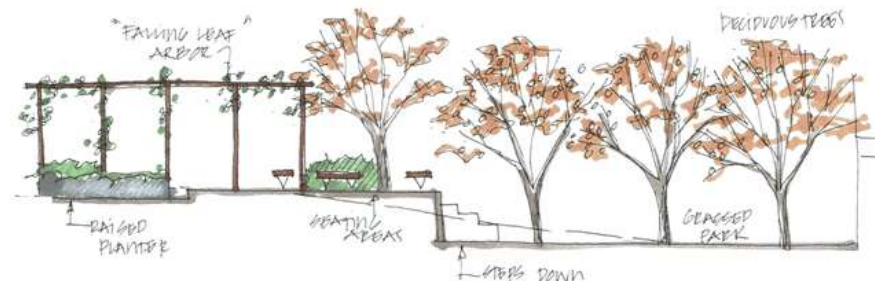






**NOTES:**

- Plant out behind existing barriers to strengthen the planting of the intersections.
- Incorporate additional tree planting to the intersection and planting to soften this area and to define the main street.
- Provide planting to traffic islands, allowing pedestrian access through.
- Provide sculpture, feature lighting, planting and gravel to roundabout.
- Plant out edges to Christmas tree planter to provide year-round interest.
- Extend existing barriers along streetscape to protect trees.
- Remove existing rubber and plant out under trees. Include additional planting above the kerb and to give the impression of greater depth of planting and to reduce the amount of hard surface areas. Incorporate seating into these areas.
- Upright art components to either side of the School of Arts.
- Art works protruding from laneway way.
- Create greater sense of space to street level to the park area.
- Existing tree to be removed.
- No toilets at this location.
- Existing tree removed. Tree to be replaced to adjacent space.
- Large circulate pats with small deciduous trees to break up paving expanse.



Proposed park treatment  
not to scale

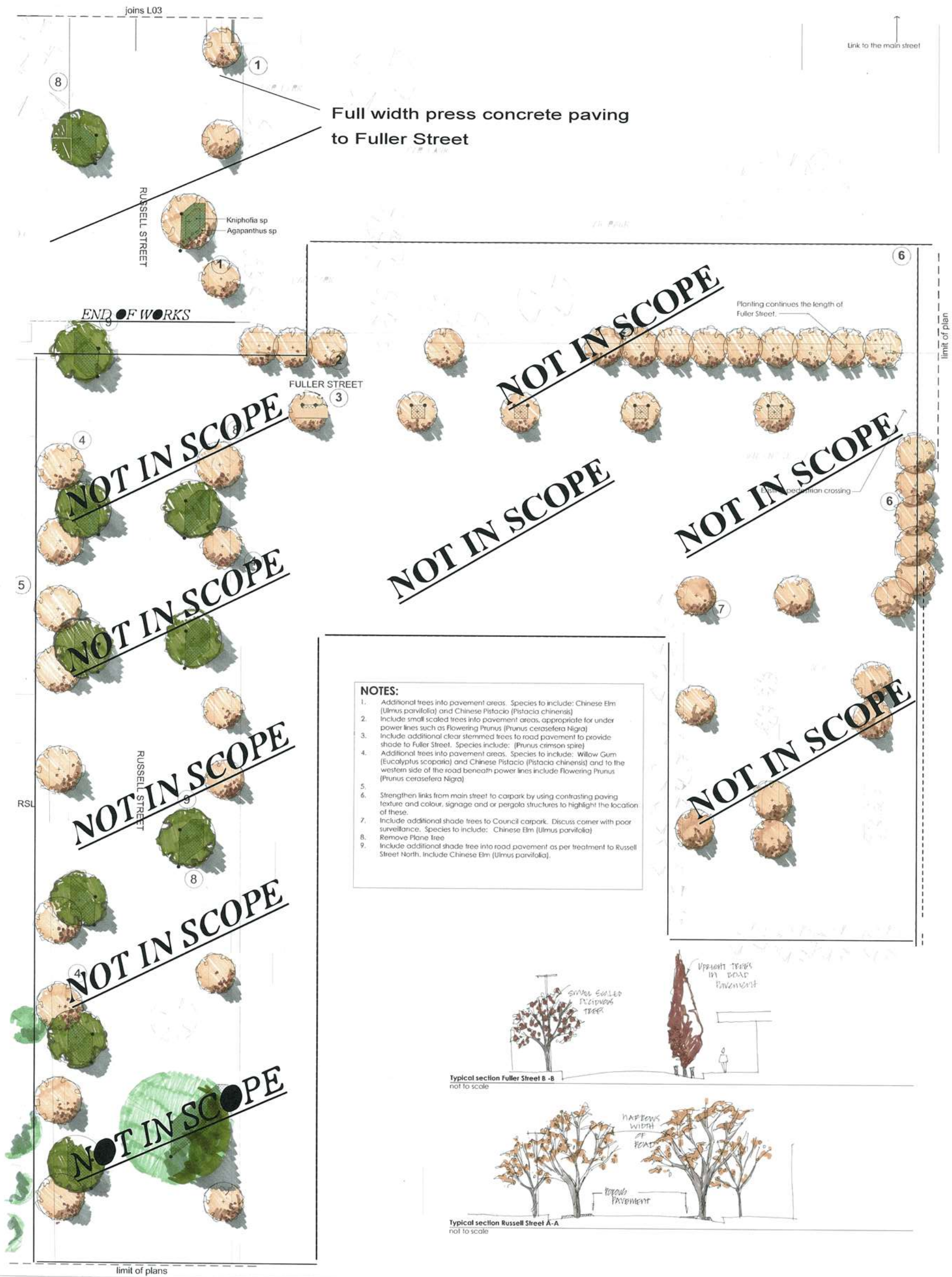
Tumut Main Street

Russell Street Roundabout



Date: 06/08/2011  
Checked By: AD  
Drawing No: Rev: L03 B





- NOTES:**
1. Additional trees into pavement areas. Species to include: Chinese Elm (*Ulmus parvifolia*) and Chinese Pistacia (*Pistacia chinensis*)
  2. Include small scaled trees into pavement areas, appropriate for under power lines such as Flowering Prunus (*Prunus cerasifera Nigra*)
  3. Include additional clear stemmed trees to road pavement to provide shade to Fuller Street. Species include: (*Prunus cimron spire*)
  4. Additional trees into pavement areas. Species to include: Willow Gum (*Eucalyptus scoparia*) and Chinese Pistacia (*Pistacia chinensis*) and to the western side of the road beneath power lines include Flowering Prunus (*Prunus cerasifera Nigra*)
  - 5.
  6. Strengthen links from main street to carpark by using contrasting paving texture and colour, signage and or pergola structures to highlight the location of these.
  7. Include additional shade trees to Council carpark. Discuss corner with poor surveillance. Species to include: Chinese Elm (*Ulmus parvifolia*)
  8. Remove Plane tree
  9. Include additional shade tree into road pavement as per treatment to Russell Street North. Include Chinese Elm (*Ulmus parvifolia*).

Typical section Fuller Street B-B not to scale

Typical section Russell Street A-A not to scale

Tumut Main Street      Russell Street South + Fuller Street

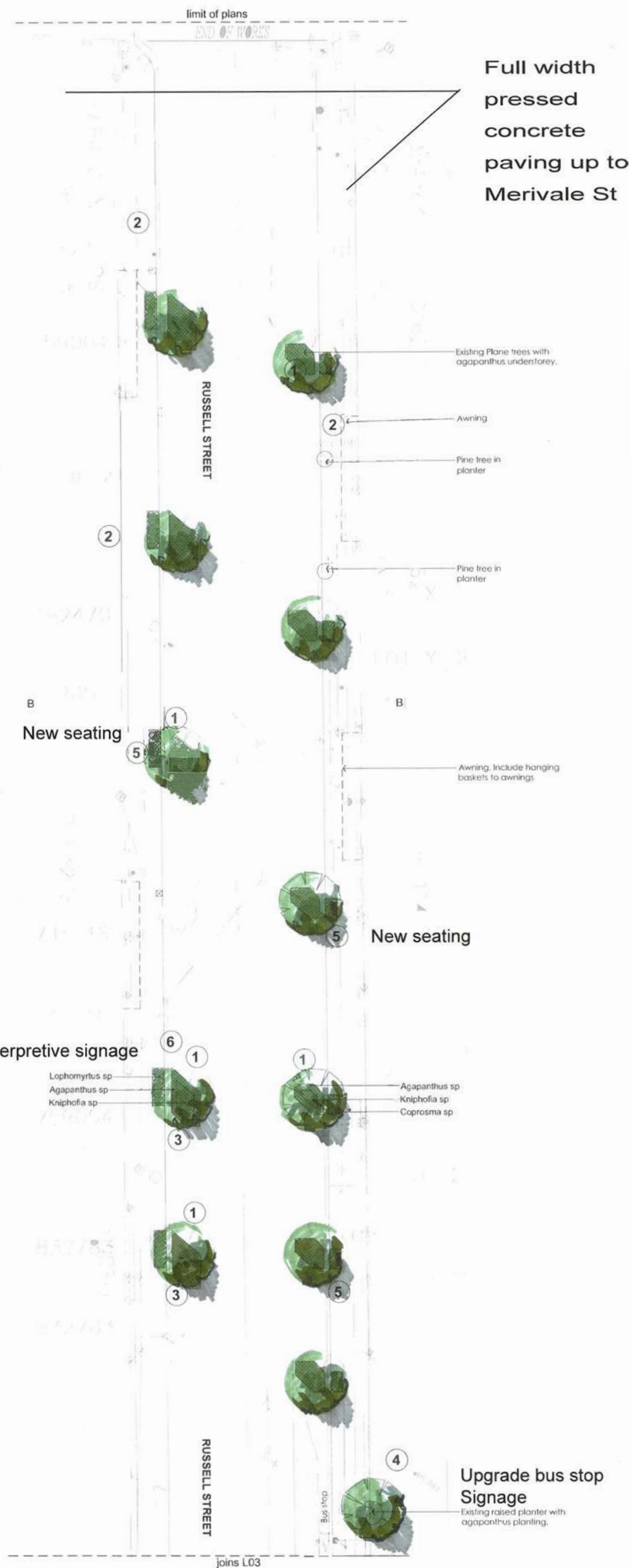
Drawing No: Rev: L04 B



- Notes**
1. Include understorey planting beneath existing street trees
  2. Blank facade does not contribute to the streetscape. Encourage shop owners to incorporate hanging baskets to verandas.
  3. Break up paving areas and include additional plantings at street level
  4. Paved courtyard contributes to streetscape and connects the arcade to Wynyard Street
  5. Include additional seating integrated into planting areas beneath existing trees for shade.
  6. Include information regarding some of the buildings of the main street area, and place them opposite the buildings so that they can be viewed whilst being read.



Planting for the roundabouts



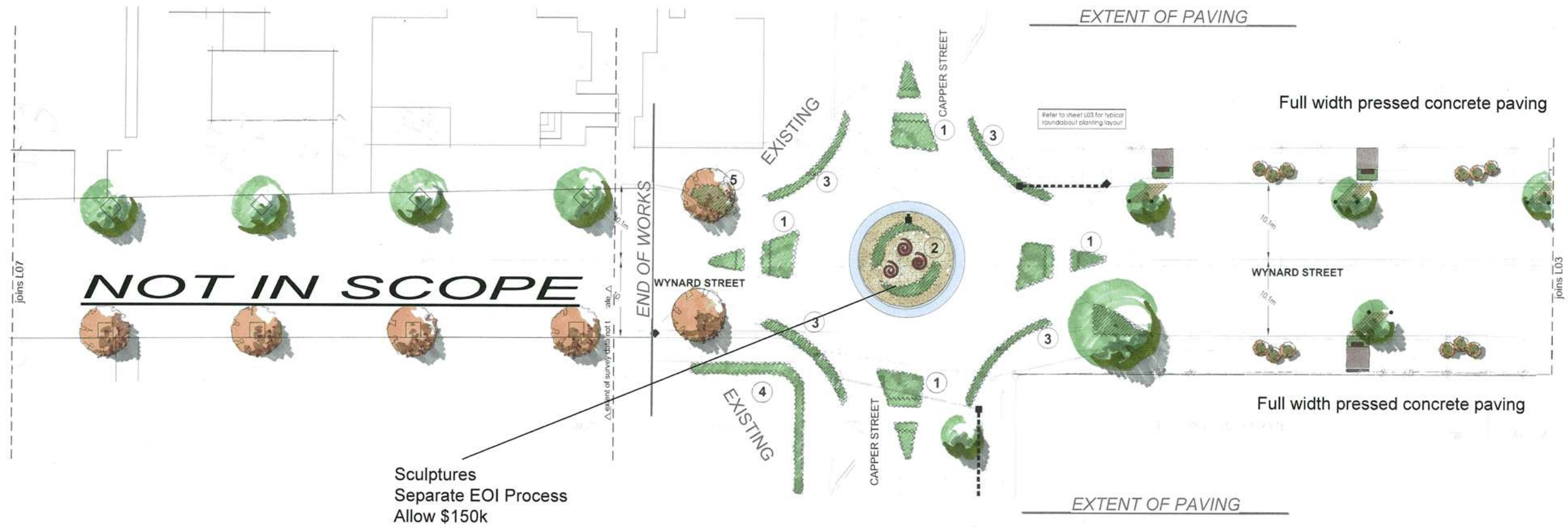
Tumut Main Street

Russell St North



Checked By: AD  
Drawing No: L05  
Rev: B





Proposed trees



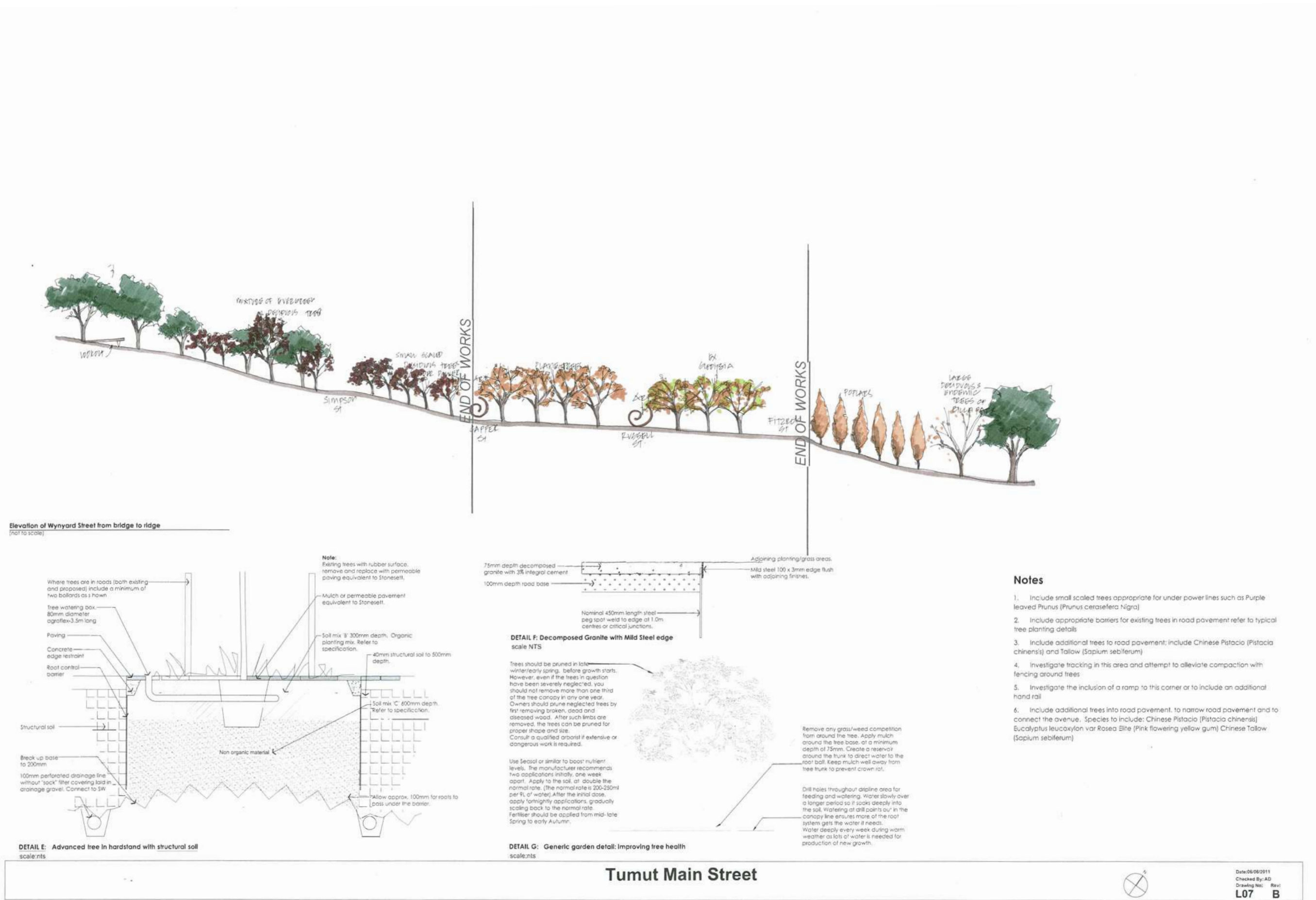
- Notes**
- 1 Plant out traffic islands provide pedestrian access through
  - 2 Plant out roundabouts and include sculpture
  - 3 Plant out behind existing barriers to strengthen the planting of the intersections.
  - 4 Provide additional planting to screen colourband fence at intersection
  - 5 Remove existing Palm tree. Proposed replacement tree.

**Tumut Main Street** **Capper St Roundabout**

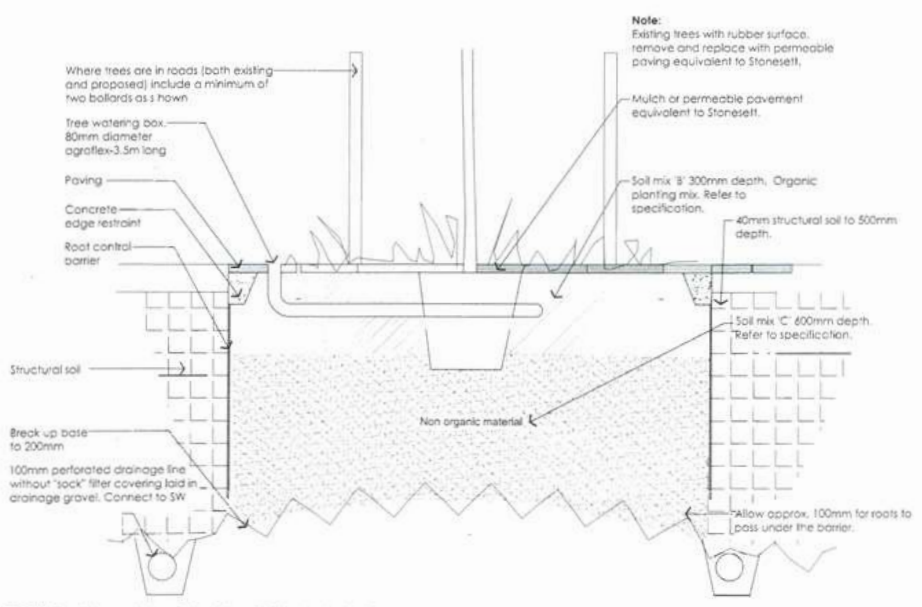
Status: DA  
Project No: **33**

Checked By: AG  
Drawing No: **L06** Rev: **B**

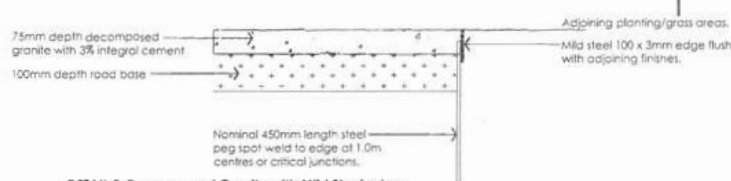




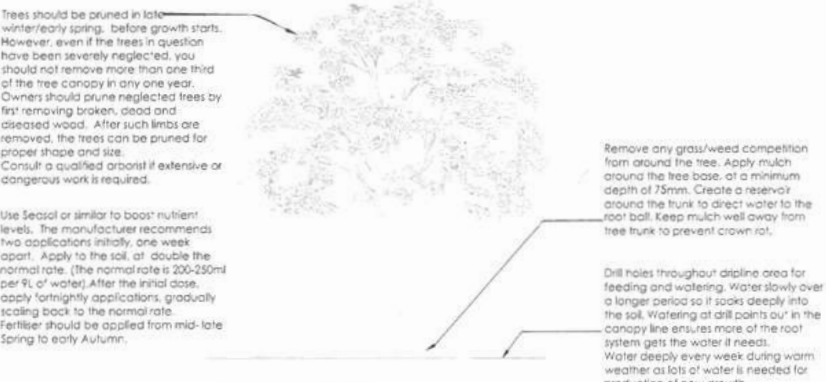
Elevation of Wynyard Street from bridge to ridge  
[NOT TO SCALE]



DETAIL E: Advanced tree in hardstand with structural soil  
scale: nts



DETAIL F: Decomposed Granite with Mild Steel edge  
scale: NTS



DETAIL G: Generic garden detail: Improving tree health  
scale: nts

Notes

1. Include small scaled trees appropriate for under power lines such as Purple leaved Prunus (*Prunus cerasifera* Nigra)
2. Include appropriate barriers for existing trees in road pavement refer to typical tree planting details
3. Include additional trees to road pavement; include Chinese Pistacio (*Pistacia chinensis*) and Tallow (*Sapium sebiferum*)
4. Investigate tracking in this area and attempt to alleviate compaction with fencing around trees
5. Investigate the inclusion of a ramp to this corner or to include an additional hand rail
6. Include additional trees into road pavement, to narrow road pavement and to connect the avenue. Species to include: Chinese Pistacio (*Pistacia chinensis*) Eucalyptus leucocylon var Rosea Elite (Pink flowering yellow gum) Chinese Tallow (*Sapium sebiferum*)

Tumut Main Street

Date: 06/06/2011  
Checked By: AD  
Drawing No: L07 Rev: B



*“Working together  
for Local Business”*

10 July 2019

Snowy Valleys Council  
Capper Street  
TUMUT NSW 2720

**RE: CBD UPGRADE – SCOPE AND RECOMMENDATIONS**

Thank you for providing the Tumut Regional Chamber of Commerce an opportunity to review the various aspects of your proposed Tumut CBD Upgrade and make a recommendation on the extent of the works.

While the committee would prefer there were not any constraints on the extent of the works so no business was excluded from the benefits of beautification of the Tumut CBD streetscape, we understand that the Council only have a limited amount of funds available to use in a short period of time therefore making that impossible.

Based on the information presented by the Snowy Valleys Council, our members voted at our July 2019 meeting for the extent of the works to be ‘Option A’ being the full upgrade of Wynyard Street from Fitzroy Street to Capper Street (8 votes to 6 - the other 6 members voting for upgrade of all CBD areas with no paving).

This decision did not come lightly and we do urge the Snowy Valleys Council to ensure that sourcing of funding for the second stage of the upgrade, being Russell Street from Merivale Street to Fuller Street, become a priority going forward. The committee felt it would be prudent that all the second stage planning and documentation be prepared now ready for project implementation as soon as the funding does become available.

Many other issues and concerns were raised during the course of discussions. We ask Snowy Valleys Council to consider these following points when implementing the project:

- Loading zones – very few loading areas in CBD, unsafe particularly at Fitzroy Street end.
- Bike racks – currently no bike racks in CBD yet cycling has become more predominant.
- Timing concerns with the Christmas period and possible detrimental effect on retailers – committee request that Council do their best to limit disruption to retailers and if possible, ensure paving is undertaken in smaller sections for minimal disturbance to business with entrances given priority in each section to enable customer access throughout the construction period. Bear in mind, those with wheelchairs, mobility aids

PO Box 715 Tumut NSW 2720 Mobile 0488 111 617  
Email: [admin@tumulregionalchamber.org.au](mailto:admin@tumulregionalchamber.org.au) Website: [www.tumulregionalchamber.org.au](http://www.tumulregionalchamber.org.au)





*“Working together  
for Local Business”*

- and prams should not be hindered in their access to retailers, where at all possible.
- Signage and advertising during the construction process notifying shoppers of retailers being still open for business.
  - Research pavers carefully and ensure they are hard wearing, stain resistant, non-slip and suitable for the expected weight/vehicle use in all areas such as driveways.
  - Consider flow of traffic to main street particularly from Fitzroy Street and pedestrian access to car parks/toilet facilities. Signage or a display on the highway directing traffic to the main street is considered beneficial by majority of our members in attendance.
  - When funding available, contemplate also including Fitzroy Street into the CBD upgrade so those businesses on the Courthouse side of the highway flow with the main street. It is felt by members that this would also entice visitors to stay and shop as that area is a main gateway to the CBD.

The Chamber understands that this was a consultation process and that Snowy Valleys Council will make the ultimate decision. However, we appreciate the chance to provide you with our members' recommendations and hope the information we have put forward assists in tailoring this project for the most impact and benefit to local business as a whole.

Yours Sincerely

Tumut Regional Chamber of Commerce

PO Box 715 Tumut NSW 2720 Mobile 0488 111 617  
Email: [admin@tumutregionalchamber.org.au](mailto:admin@tumutregionalchamber.org.au) Website: [www.tumutregionalchamber.org.au](http://www.tumutregionalchamber.org.au)

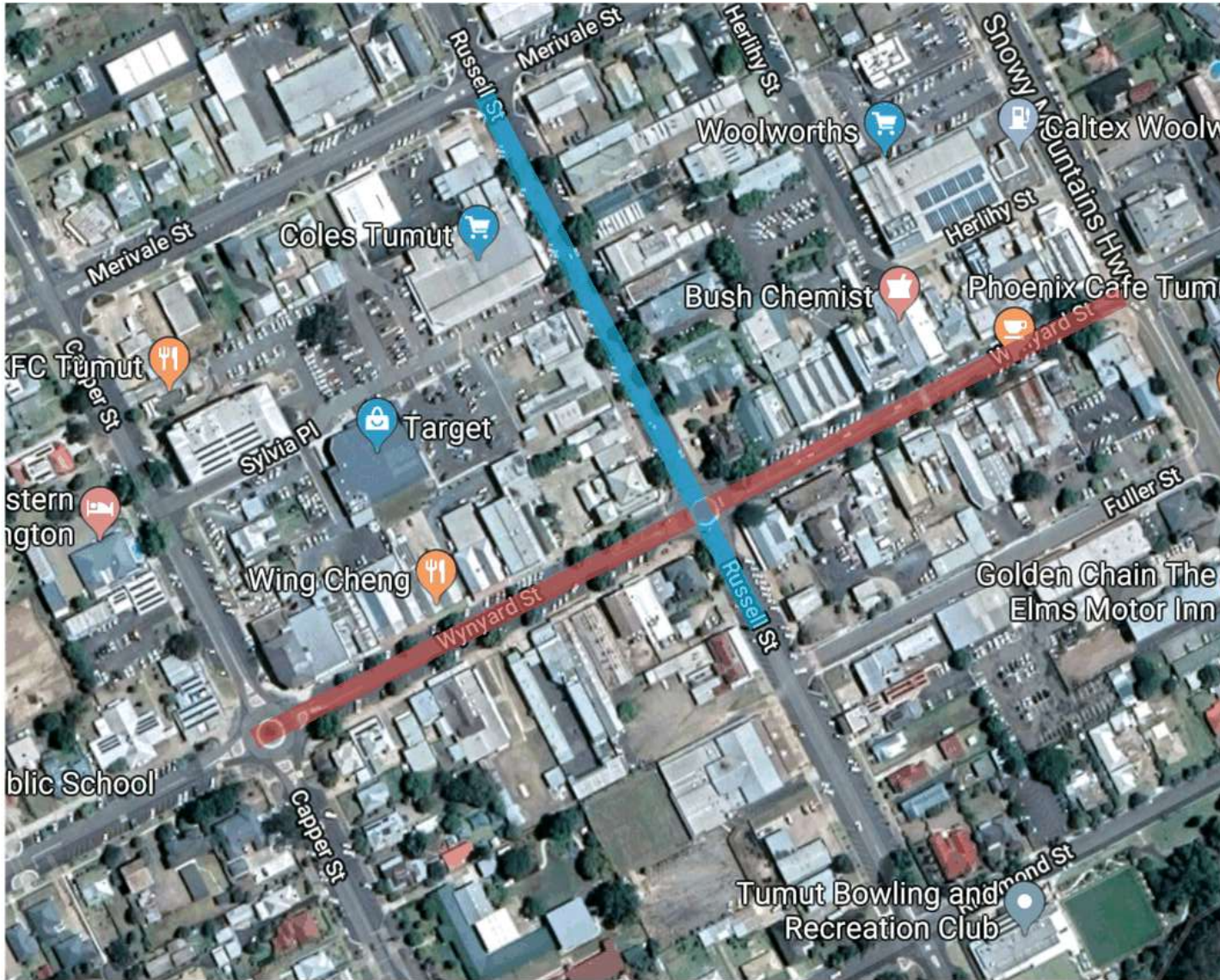




# TUMUT CBD UPGRADE PROJECT INTRODUCTION







- STAGE ONE
- STAGE TWO



# Process

Establish extent of upgrade

Engage with businesses and other stakeholders

Tender period

Construction

# Input From All Businesses

Tell us how you and your customers currently use the site and how your business needs can be considered during the works.



# What Plants Will We See?





# What Trees Will We See?





# What Else?

- Upgraded and new seating
- Upgraded and new rubbish bins
- Repainted bollards and lightpoles
- Tree surrounds
- Upgraded pedestrian crossing

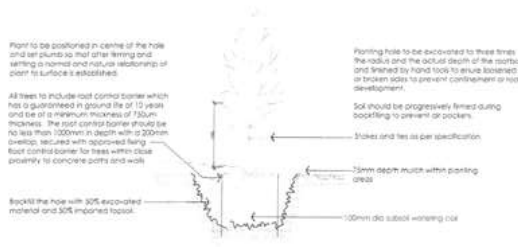


# Paving

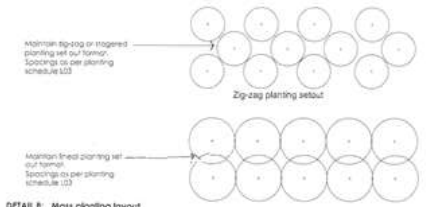




DRAFT ISSUED FOR COMMENT



DETAIL A: Advanced tree planting in grass or garden bed  
scale: 1:5



DETAIL B: Mass planting layout  
scale: 1:5



DETAIL C: Existing bollards  
scale: 1:5



DETAIL D: Existing fence  
scale: 1:5

TUMUT MAIN ST PLANT SCHEDULE - Fitzroy to Capper

Trees	Symbol	Species	HxW	Common name
Abc		Abies Australis Breeze	13 x 10m	Red Spruce
Es		Eucalyptus obliera	15 x 10m	White Oak
ES		Eucalyptus scoparia	12 x 8m	Willow gum
Ha		Hamelis raywood	12x8m	Claret Ash
LN		Loganberry 'Natchez'	6 x 4m	Chase myrtle
Ns		Nyssa sylvatica	11x8m	Tupelo
SS		Scaphium wickhamii	8x3m	Chinese follow tree
GR		Grewia robusta		Silly Dick tree
UP		Ulmus parvifolia	12 x 10m	Chinese Elm
PC		Pittacoba chinensis	8 x 5m	Chinese Pistachio
PSF		Populus simonsii Parkiana	12 x 4m	Simons poplar
PCS		Prunus cerasifera 'Chesham Spire'	8 x 4m	Purple leaf plum
PN		Prunus caroliniana Nigra	4 x 4m	Purple leaf plum

Symbol	Species	Spacing	Size	HxW	Flower Colour	Flowering time	Type	Foliage Colour
Ab	Abies australis	300mm	140mm	800 x 300mm	Violet	Early summer, for 2-3 weeks	Perennial	Grey-green
Am	Anemone hepatica robert	300mm	140mm	300mm x 400mm	White	Late Summer to early Autumn	Perennial	Dark green
Ap	Asparagus orientalis	300mm	140mm	300 x 300mm	Lavender/Blue	Late Spring through to Summer	Evergreen	Dark green
BRG	Berberis Roy Glow	800mm	140mm	800 x 500mm	Pale yellow	Summer to Autumn	Deciduous	Purple red
Cc	Carya sp.	400mm	140mm	400x400mm	Bright red fruit	Autumn to Spring	Evergreen	Bright green
CR	Coprosma Kara Red	1.0m	200mm	1.2m x 800mm	No flower	-	Evergreen	Black-red purple-red in Winter
Ca	Cornus generalis President	300mm	140mm	300mm x 300mm	Light red	Summer to Autumn	Perennial	Straw green and deep burgundy
Du	Daphne odora	400mm	140mm	400 x 300mm	Purple berries	-	Evergreen	Dark green blue purple
Er	Echinops	400mm	140mm	400 x 300mm	violet blue	-	Perennial	Silvery blue foliage
Er	Eriogonum Yalapani carpet	1m	140mm	Prostrate x 1.3m	Yellow yellow	Spring and Summer	Evergreen	Silvery grey
HC	Heuchera Chocolate Butter	400mm	140mm	300mm x 400mm	white leaf, orange	-	Evergreen	Dark chocolate-purple
HR	Hederaera Flat white	800mm	140mm	0.1 x 2m	white or mauve	Late Winter to late Spring	Evergreen	Dark green
Kw	Kunzia Winter Caper	300mm	140mm	400 x 400mm	Orange	-	Evergreen	Dark green
L	Lonicera intermedia Scapp	400mm	140mm	400 x 400mm	Dark purple	Spring to Summer	Perennial	Dark green
Up	Uphornia rubra Pink	500mm	140mm	1.0 x 0.8m	Small white, with dark red berries	Summer	Evergreen	Dark red/purple
Mp	Myoporum Pink	800mm	140mm	Prostrate x 1m	white/pale pink with purple spots	Late Spring to early Autumn	Evergreen	Silvery grey
Ph	Phlox paniculata (Basset)	3x spaced	By seeds	420x400mm	Blue	Spring	Annual	Green
Pr	Prunella rosea	400mm	140mm	400 x 1.0m	Bright pink	Winter and Spring for 8-10 weeks	Evergreen	Dark green
Rc	Rosa rugosa	400mm	140mm	400 x 400mm	Light pink	-	Evergreen	Mid-green
Tc	Tetralix chrysocoma	400mm	140mm	200 x 300mm	Bright yellow	Summer	Evergreen	Silvery grey
Hsd	Heisteria Hella Doro	400mm	140mm	300 x 300mm	Yellow	Spring to Autumn	Perennial	Dark green
Ts	Tachyspermum sp. 100m	600mm	140mm	1.0 x 5m	white	Summer	Evergreen	Dark green foliage
Tt	Tetrum Tuscany	200mm	140mm	1.0 x 1m	Blue	Early to late summer	Evergreen	Blue-grey

Tumut Main Street

Philosophy

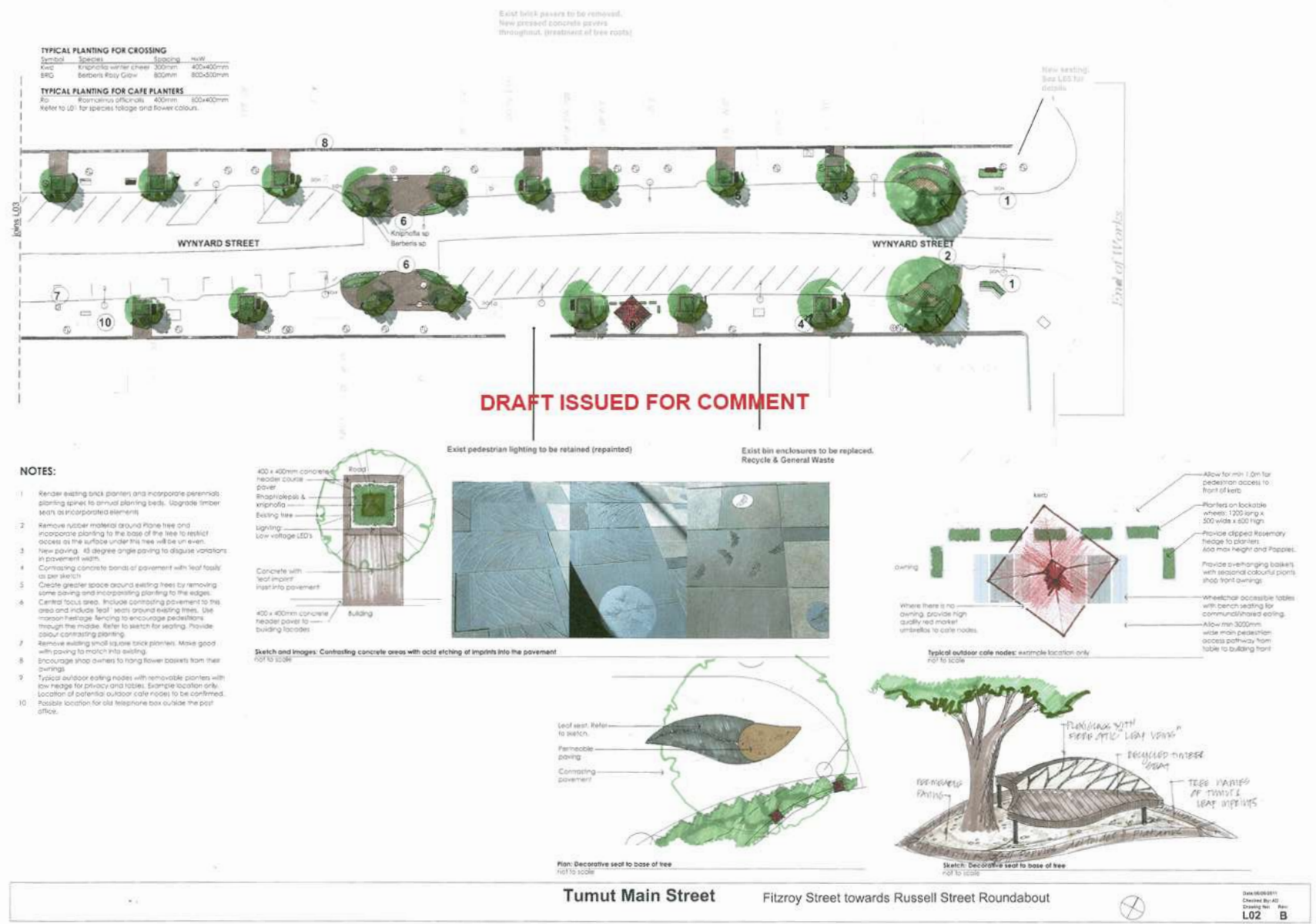
- The motivation for Wynyard Street Tumut aims to:
  - Provide a vibrant and unique landscape which reflects Tumut
  - Incorporate colour, texture and more plantings to help define the focal areas and intersections of the main street.
  - Be respectful of the unique architectural character of Wynyard Street.
  - Recognise the Aboriginal history of the site as a relevant meeting place.
  - Build on the existing streetscape elements and incorporate opportunities for art sculpture which reflects the character of Tumut and its association with its Festival of the Falling Leaf.
  - Connect the entire main street through varied and thematic plantings that provide an experience and hierarchy of planting from one end to the other.

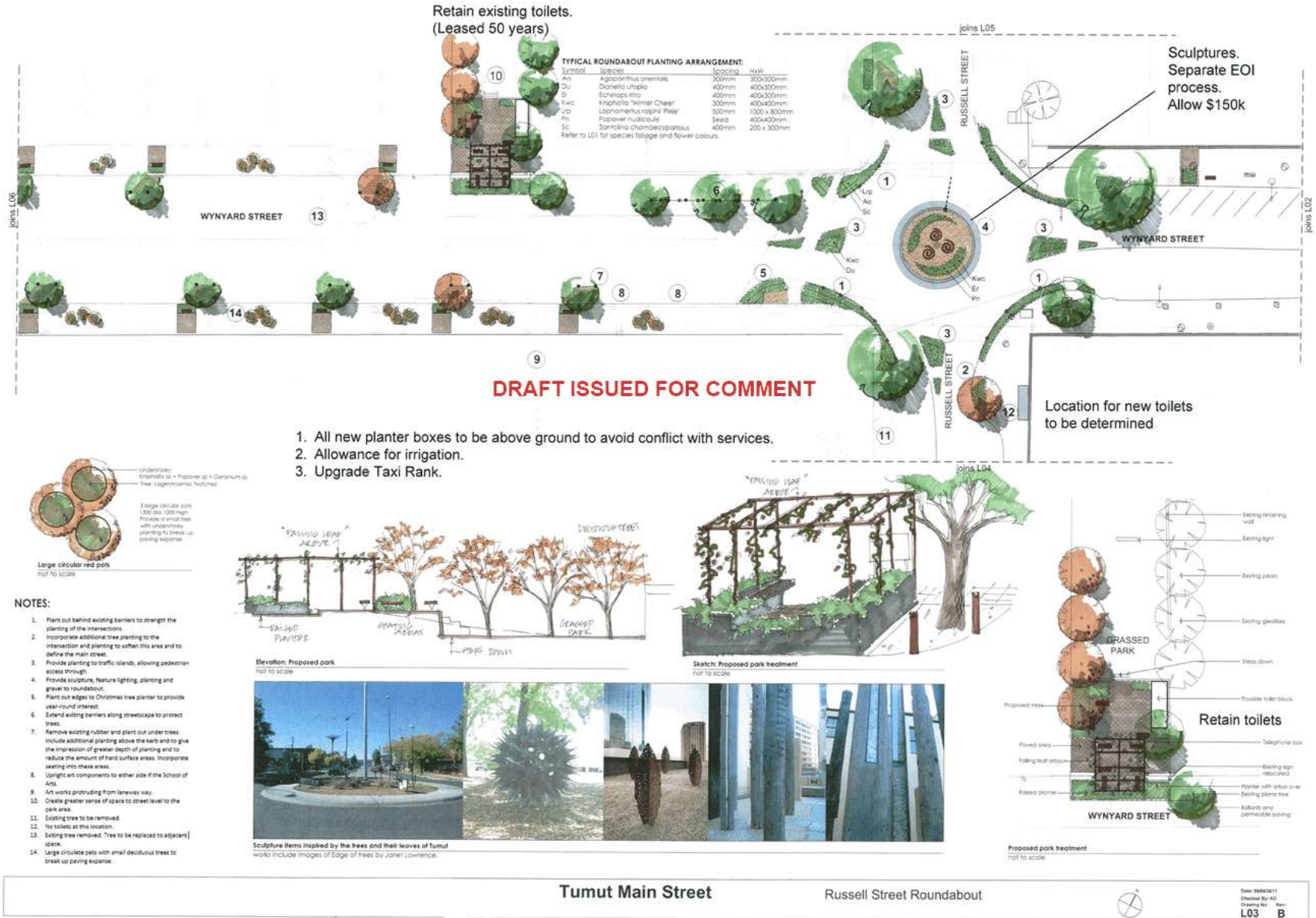
Legend-Refers to all sheets

- Paving: To proposed park areas: 400 x 400mm concrete pavers
- Paving: Reseal course to building facade: 400 x 400mm concrete pavers
- Compact hard surface area: Containing concrete areas with varying texture and 'foot leaf' impacts
- Permeable paving: Permeable paving equal to Stoneart
- Decomposed granite: To roadworks and where shown
- Planting areas: Planting areas and future planting areas to get indicative aim
- Existing pedestrian railings: To be retained
- Existing streetlight: To be retained / replaced
- Existing bins: To be replaced
- Proposed seating
- Existing seating - Upgrade
- Existing trees
- Sculpture by local artist: Sculpture to reflect falling leaves and the trees of Tumut
- Additional fencing: Additional fencing to match existing
- Planting to base of street trees
- Proposed evergreen trees: Refer to notes and planting schedule for species
- Proposed deciduous trees: Refer to notes and planting schedule for species
- Leaf seats to high pedestrian crossing: Refer to detail - Curium loop
- Bollards: Refer to detail
- Signage relating to historical buildings
- Pergola structure with deciduous vines







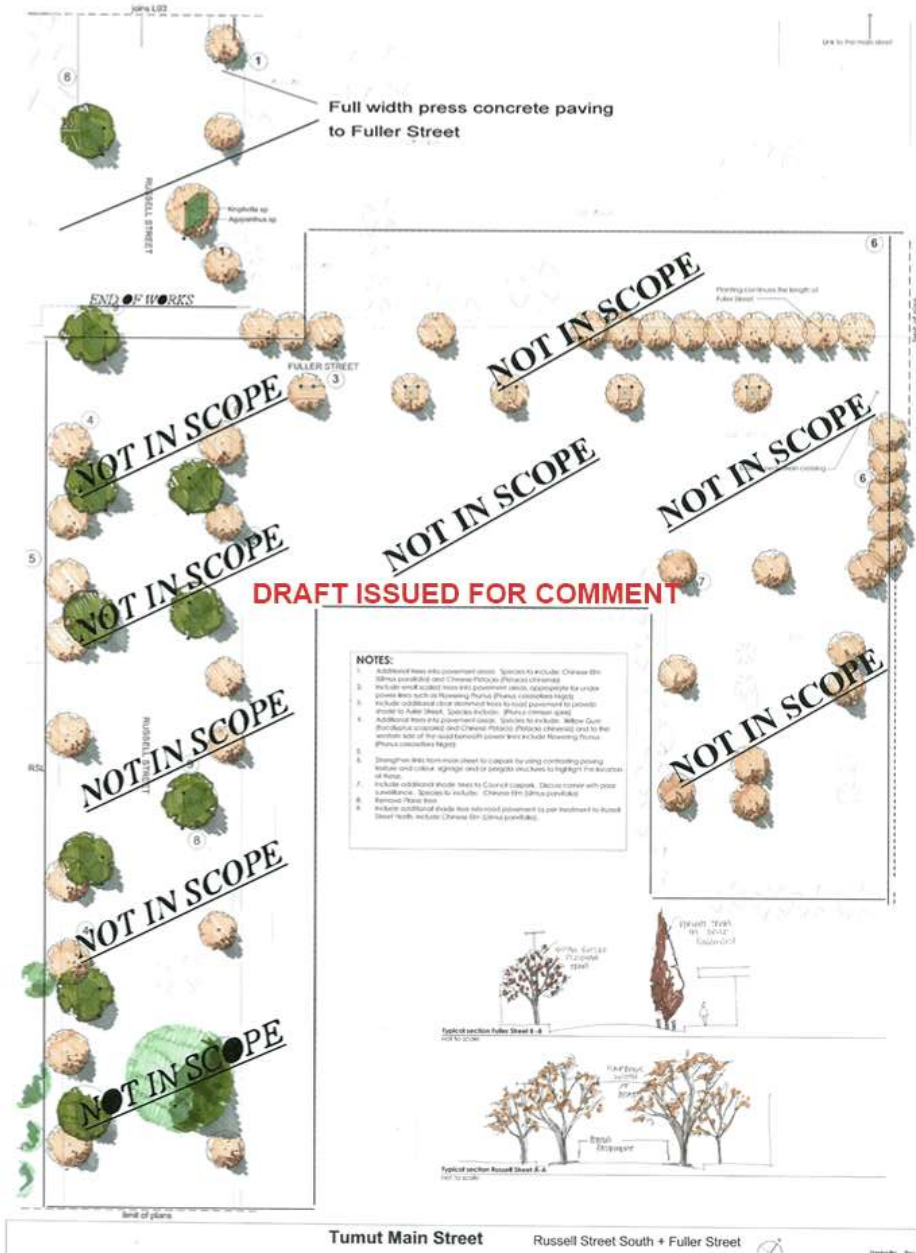


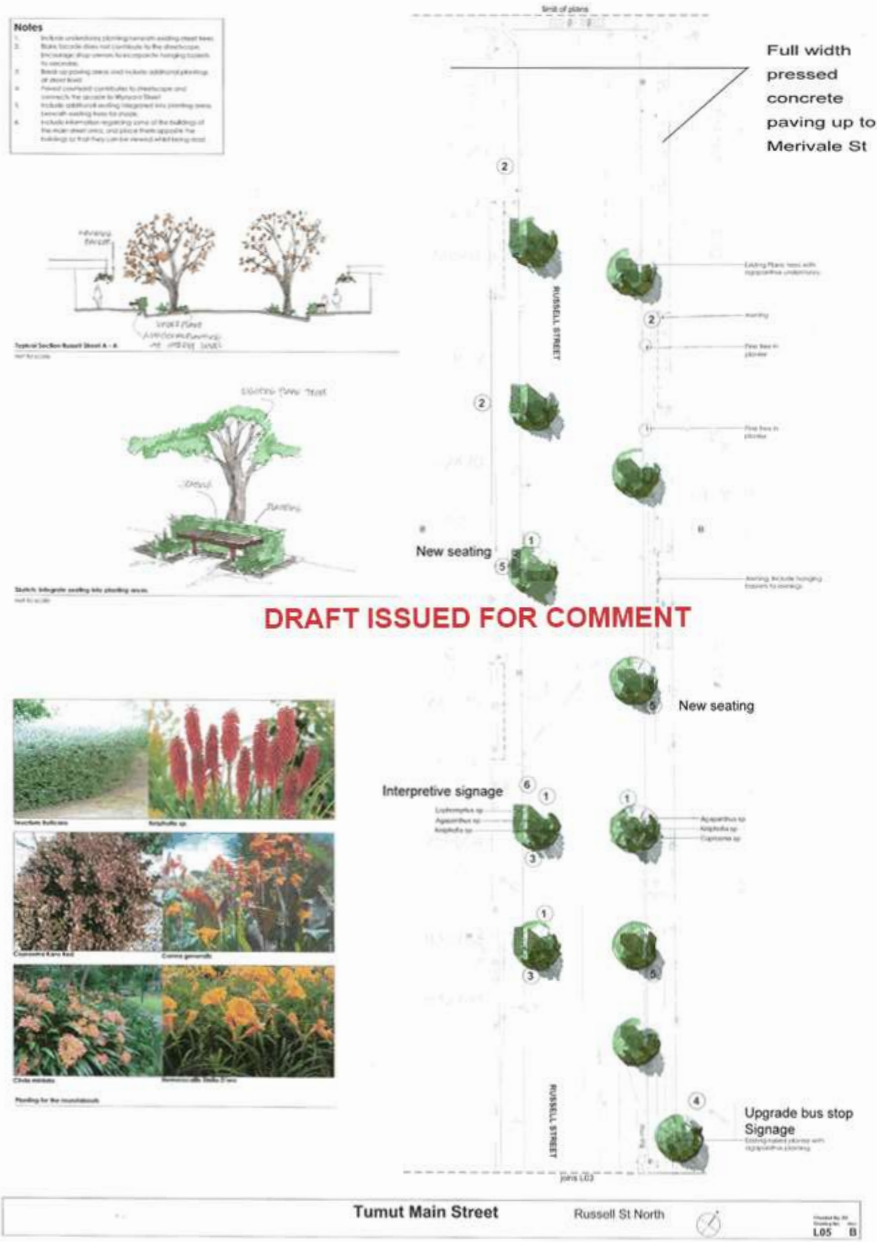
Tumut Main Street

Russell Street Roundabout

Rev: 06082011  
Checked By: AD  
Drawing No: L03  
Rev: B







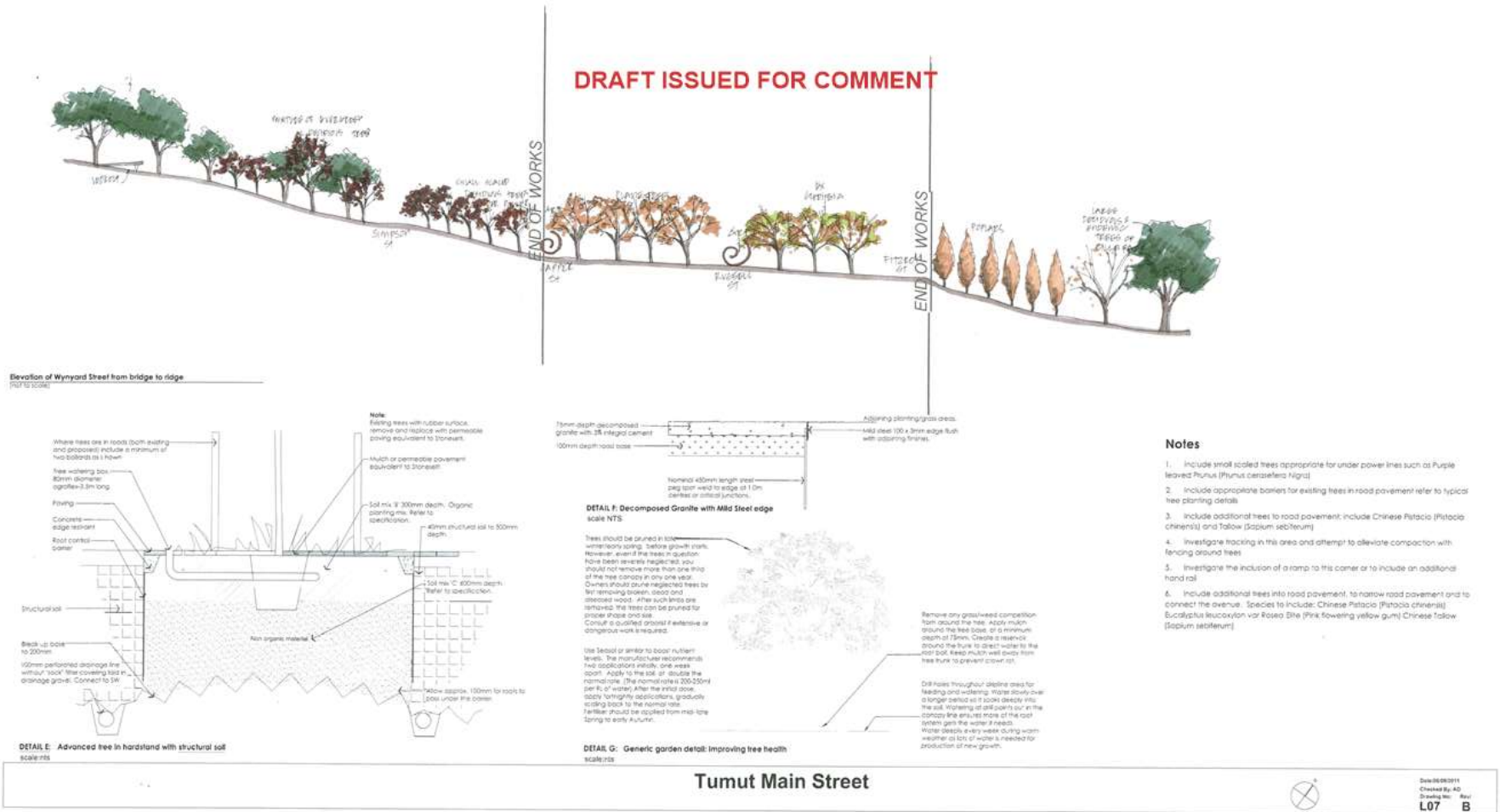




- Notes**
1. Plant out traffic islands provide pedestrian access through
  2. Plant out roundabouts and include sculpture
  3. Plant out behind existing barriers to strengthen the planting of the intersections
  4. Provide additional planting to screen surrounding fence or intersection
  5. Remove existing Palm trees. Proposed replacement tree.

Tumut Main Street      Cappier St Roundabout

Drawn By	Checked By
33	L06 B



- Notes**
1. Include small scaled trees appropriate for under power lines such as Purple leaved Plum (*Prunus caroliniana* nigra)
  2. Include appropriate barriers for existing trees in road pavement refer to typical tree planting details
  3. Include additional trees to road pavement: include Chinese Pistacia (*Pistacia chinensis*) and Talow (*Sapium sebiferum*)
  4. Investigate hocking in this area and attempt to alleviate compaction with fencing around trees
  5. Investigate the inclusion of a ramp to this corner or to include an additional hand rail
  6. Include additional trees into road pavement, to narrow road pavement and to connect the avenue. Species to include: Chinese Pistacia (*Pistacia chinensis*), *Escallonia leucocarpa* var *Rosea* Dru (Pink flowering yellow gum) Chinese Talow (*Sapium sebiferum*)



1

## Demolition

**\$298,640**

Includes;

- > paver removal
- > some planters
- > some trees

2

## Street furniture

**\$378,000**

Includes;

- > upgrade timber seats
- > additional & other seating
- > information signage
- \* potentially artwork

3

## Landscaping

**\$311,896**

Includes;

- > render existing planters
- > plantings
- > trees
- > irrigation

4

## Paving

**\$1,417,460**

Includes;

- > supply and install of 10,000m2 of concrete pavers

5

## Lighting

**\$15,000**

Includes;

- > feature lighting
- > repainting existing street lighting



# NEXT STEPS

1

## Recommendation Consultation

Chamber makes recommendation at 8 July Meeting

2

## Documents

Council consults with all businesses to inform businesses of project and understand needs e.g. delivery access

3

## Tender

Tender documents developed with consideration of business needs during construction.

4

## Construction

Tender for design and construction undertaken. Timeframe and design confirmed during tender process.





# Options

## Option A

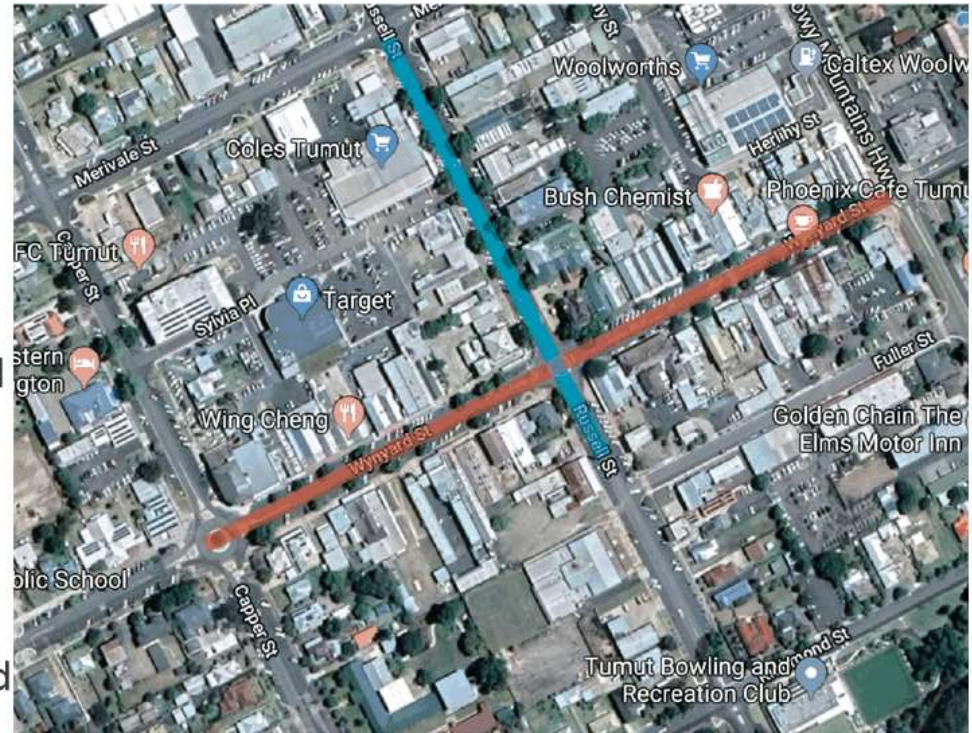
Complete Stage One as identified in concept plan to a value of \$1.7M (funded by grant received) and seek further funding for Stage Two estimated to cost a further \$700,000

## Option B

Undertake feature paving along both Wynyard & Russell Streets with landscaping and refurbished street furniture to the value of \$1.7M

## Option C

Prioritise \$1.7M in works across both Wynyard and Russell Streets in conjunction with the Chamber and seek further funding for remainder of works.



# MORE INFORMATION



Vanessa Keenan - 0418 445 131



[projects@svc.nsw.gov.au](mailto:projects@svc.nsw.gov.au)



[www.yourvoice.svc.nsw.gov.au](http://www.yourvoice.svc.nsw.gov.au)