

Climate risk and opportunity for Snowy Valleys

Snowy Valleys Council Climate Change Forum 29 April 2019



Mel Hillery, Regional Preparedness, Climate Resilience & Net Zero Emissions

Climate Risks & Opportunities for Snowy Valleys

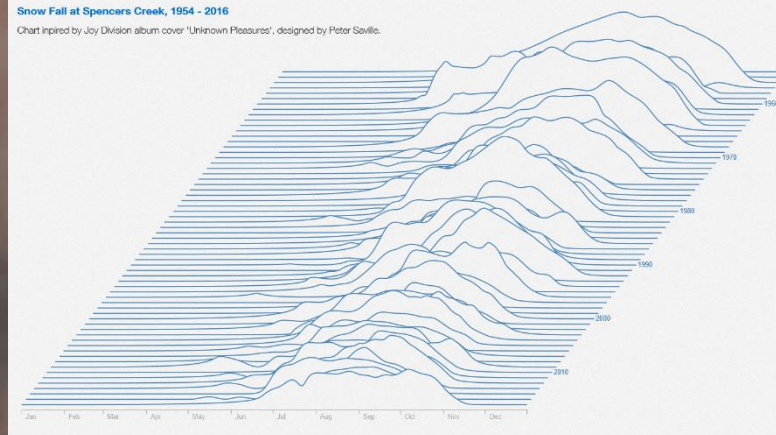


1. **The case for action**
2. KNOW: Climate observations and projections
3. ASSESS: NSW government
4. ASSESS: Risks and opportunities for Snowy Valleys
5. RESPOND: NSW Government support

What's with the weather: SE and eastern Riverina of NSW?



Bega District Times 18 March 2018



Heat and radiation damage to apples: Apple and Pear Australia Ltd



Australian Geographic Oct 2017
Image: Sharon Wormleaton/OEH



Corowa Flood October 2016, ABC



Bombala Times June 2018



Western Advocate Wagga Wagga dust storm Feb 2019



Guardian Australia Feb 2016

Climate change poses both risks and opportunities to council, local businesses and the wider community

Risks and opportunities can be partitioned into two areas:

- Physical risks from changes in the local climate, and
- Transition risks and opportunities associated with the shift to lower emissions.

Our failure to adequately address them can lead to legal and liability risks

The case for action



Climate Risks & Opportunities for Snowy Valleys



Vic wine grapes ripen 2 days earlier each year, Guardian Australia Feb 2016



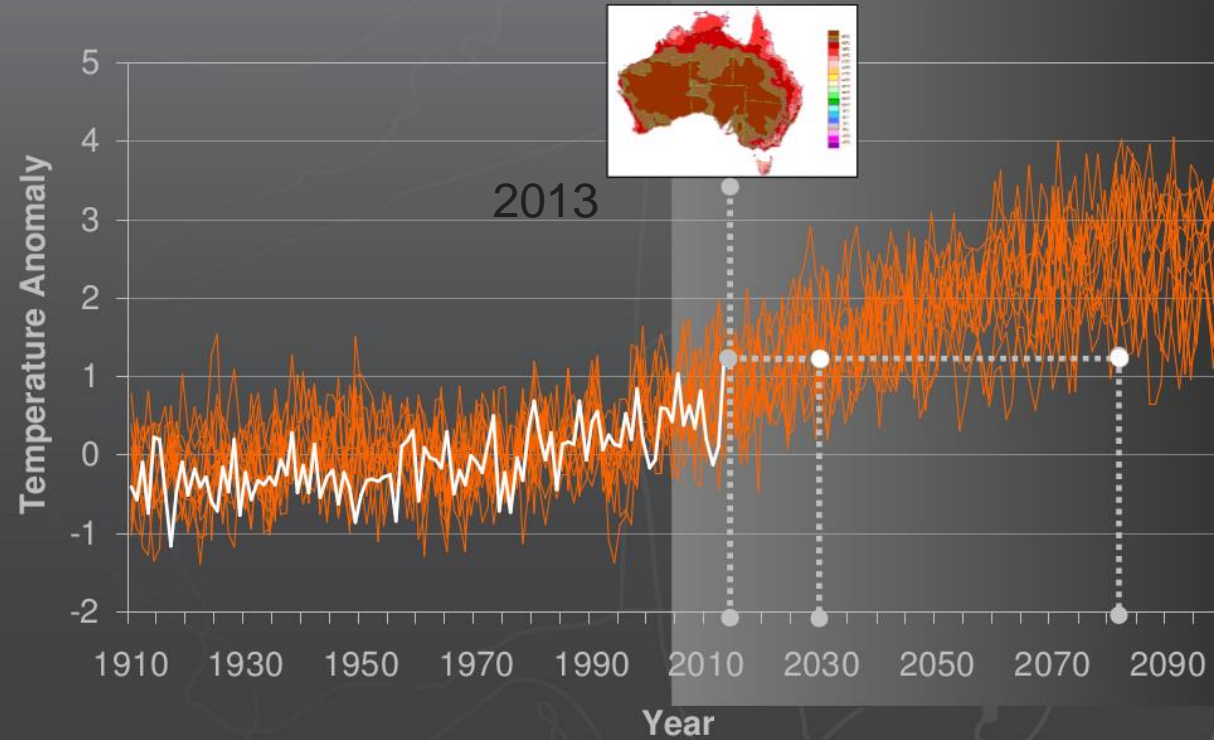
Summer tourism O'Hares campground Tumut River, E. Shearwood

1. The case for action
2. **KNOW: Climate observations and projections**
3. ASSESS: NSW government
4. ASSESS: Risks and opportunities for Snowy Valleys
5. RESPOND: NSW Government support

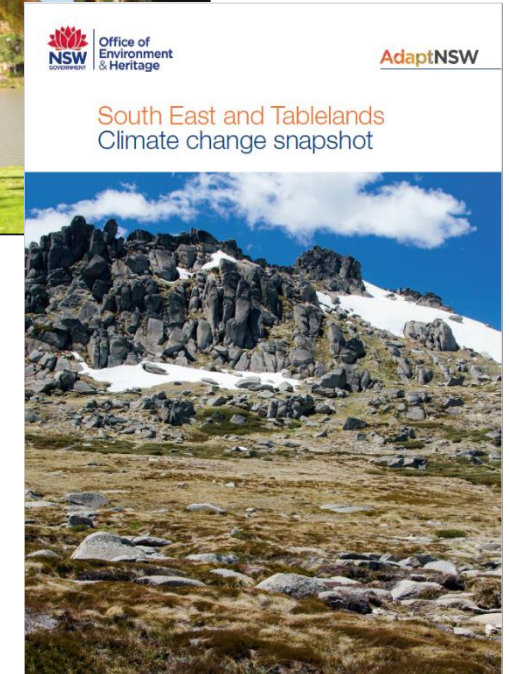
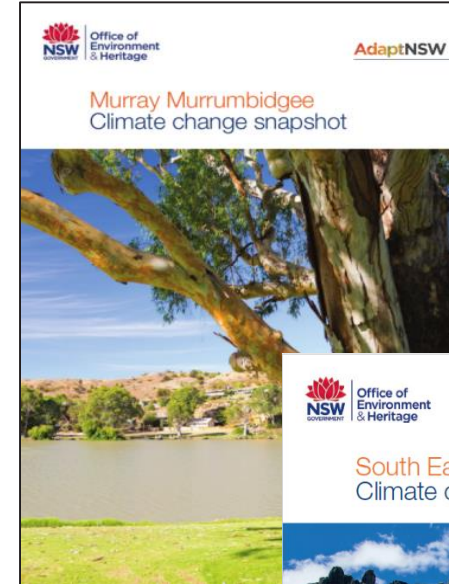
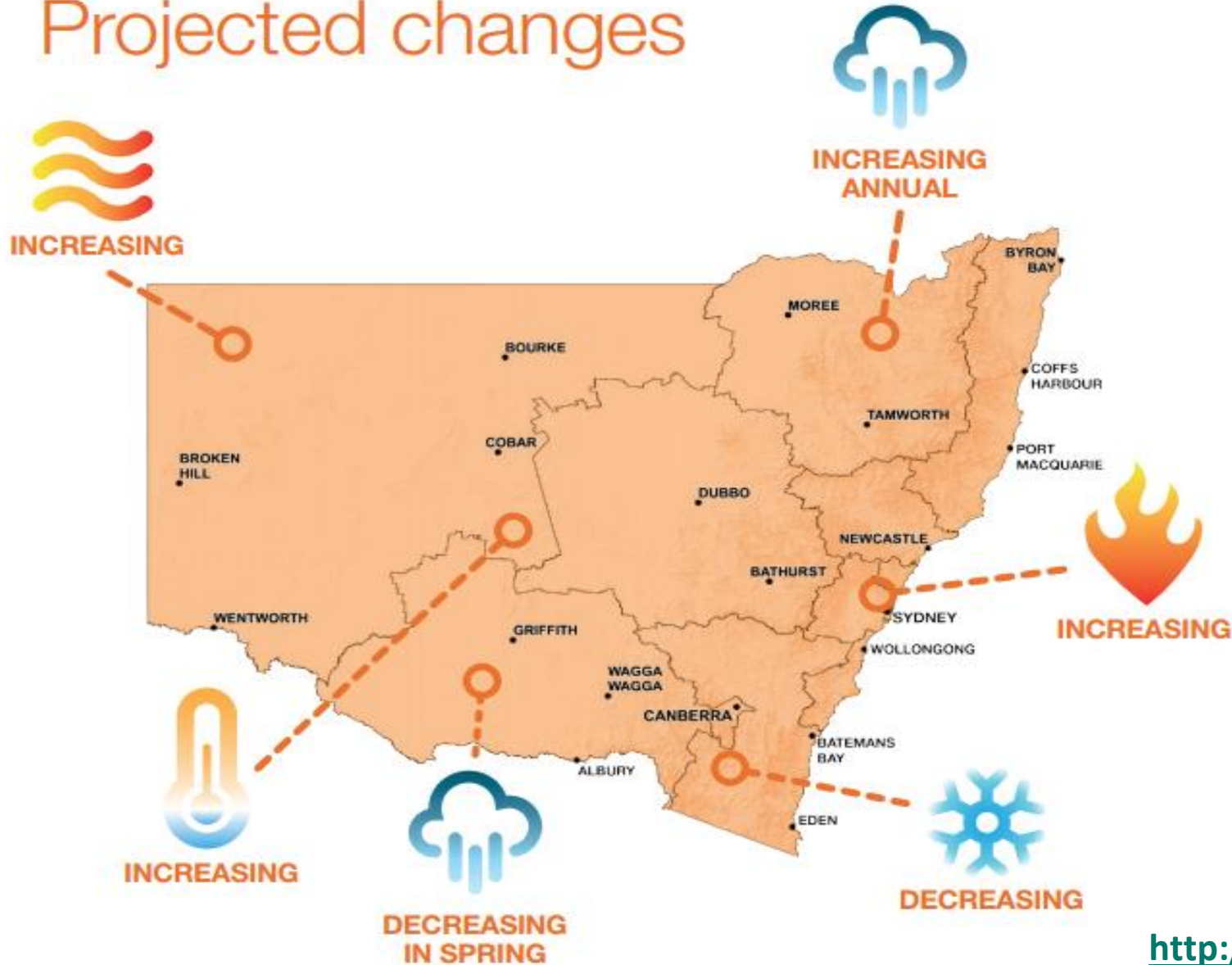
Projections of Australian annual temperature

Observed annual temperature

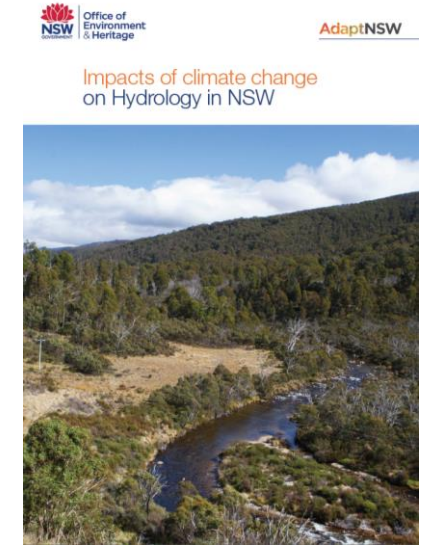
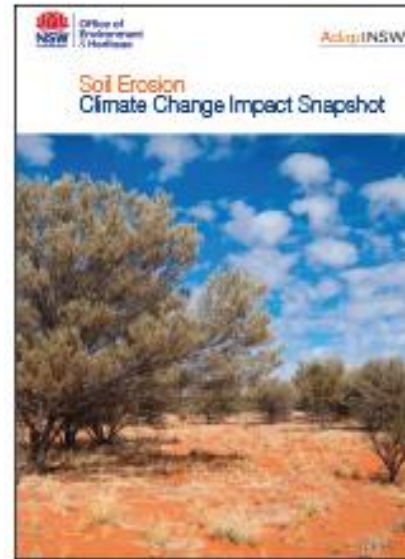
RCP4.5 projected annual temperature



Projected changes



- Water resources
- East coast lows
- Extreme rainfall
- Heatwaves
- Soil properties
- Soil erosion and Rainfall erosivity
- Urban heat

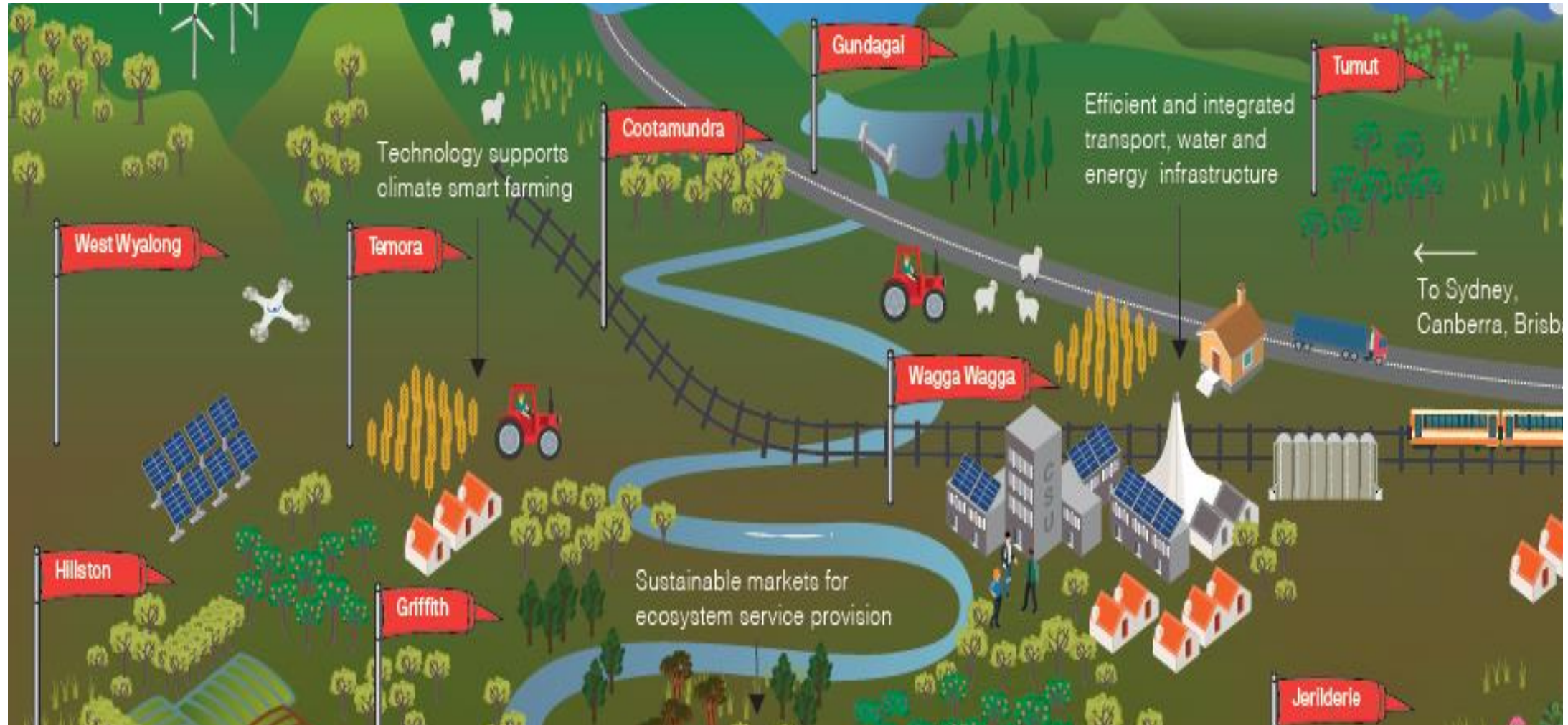


Climate Risks & Opportunities for Snowy Valleys



1. The case for action
2. KNOW: Climate observations and projections
3. ASSESS: NSW government
4. ASSESS: Risks and opportunities for Snowy Valleys

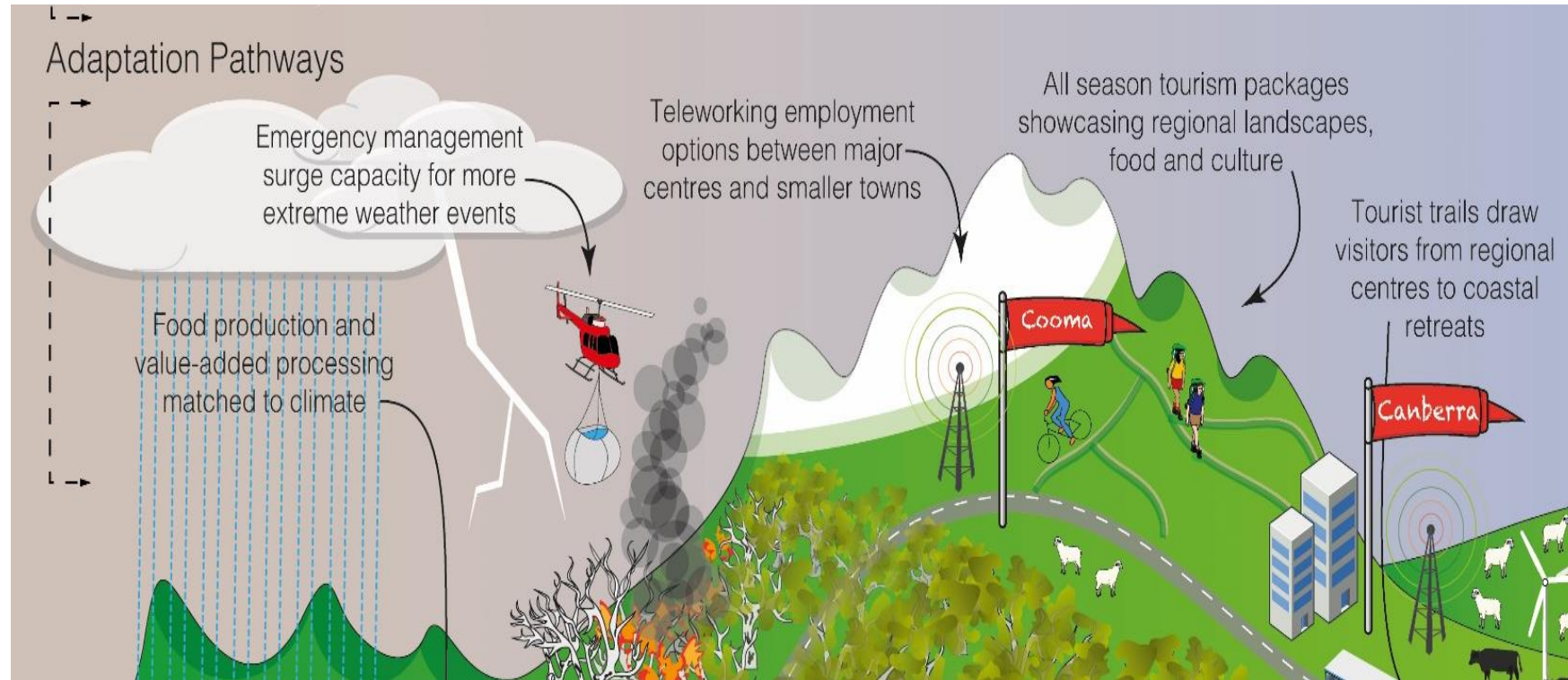
Priority systems and adaptation pathways



- Riverine ecosystems
- Land management

- Mixed farming
- Irrigated agriculture
- Energy

- Small communities
- River Tourism



- large regional towns
- agricultural service centres
- coastal development
- potable water supply

- emergency management
- alpine tourism
- beach tourism
- public land management

- coastal ecosystem management
- off-reserve conservation
- extensive grazing
- dairy farming

Climate Risks & Opportunities for Snowy Valleys



1. The case for action
2. KNOW: Climate observations and projections
3. ASSESS: NSW government
4. **ASSESS: Risks and opportunities for Snowy Valleys**
5. RESPOND: NSW Government support

Local Government Climate Change Action

- Councils and their communities are leading the way on climate action
- 20 years of action - reducing corporate emissions included energy audits of large facilities, installing solar PV and upgrading lighting in council facilities
- Some councils signing the Global Covenant of Mayors for Climate & Energy
- Councils increasingly adopting corporate emissions reduction targets for e.g. Coffs Harbour City Council – 100% renewable energy by 2030
- 19 out of 20 councils in the Riverina Murray region have a completed climate change risk assessment (CCRA)

Cycle classic in Tumut Jan 2017, Tumut and Adelong Times

Climate Change Risk Assessment

- Councils who have completed a CCRA, mostly focused on climate change risks to council assets, operations and services and not addressing the risks of climate change to local communities
- Increasing Resilience to Climate Change (IRCC) program requires a CCRA to be completed in the last 5 years putting most CCRAs out of date, e.g. completed before 2014
- Councils are starting to revise their CCRAs

Does your council have a Climate Change Risk Assessment (CCRA)?

2015

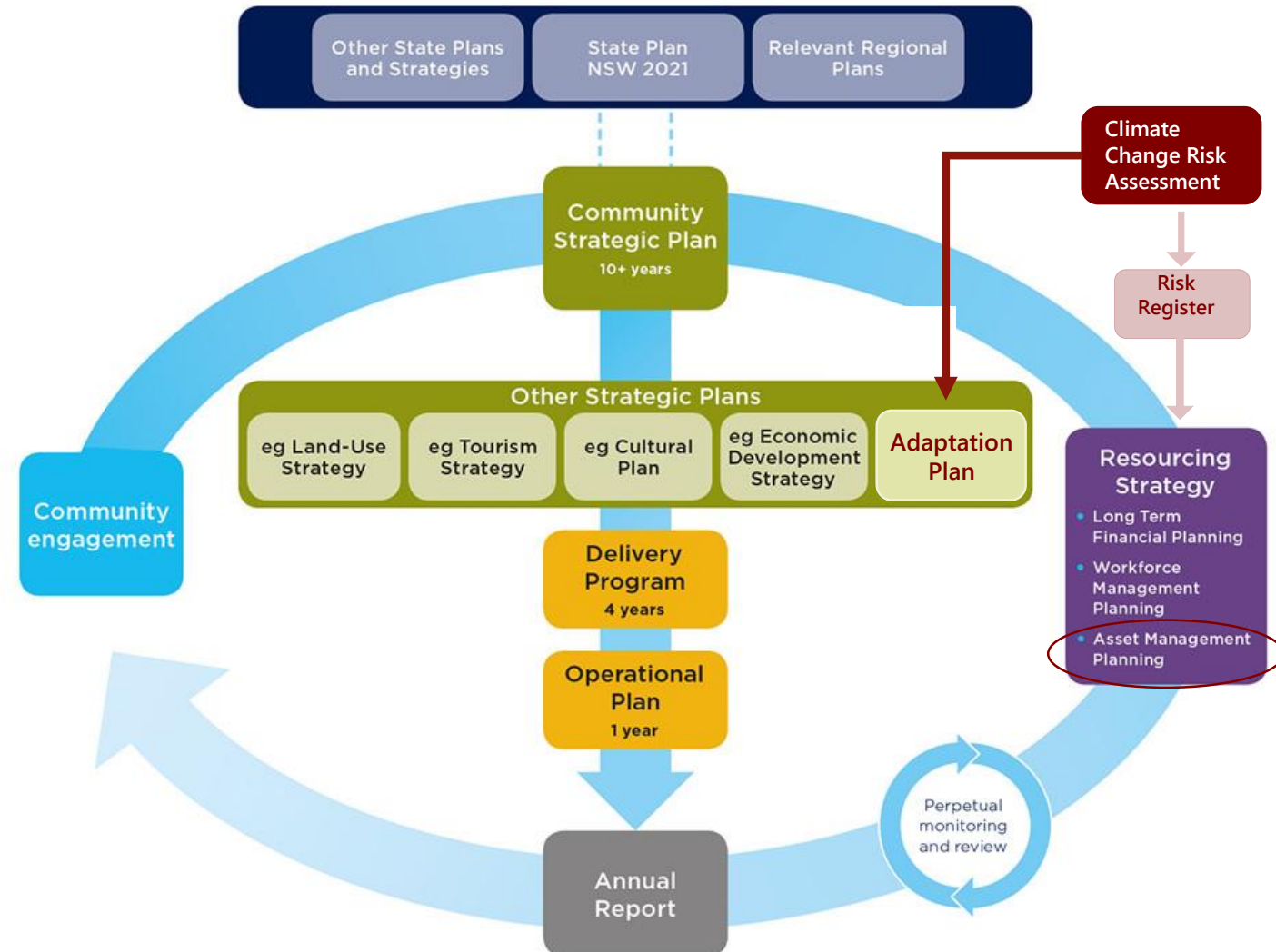
70% of respondents indicated they had a CCRA

2018

44% of respondents indicated they had a CCRA

How to integrate CCRA into Integrated Planning & Reporting framework

- Integrating climate risk into the IP&R framework
 - Community Strategic Plan- community engagement
 - Delivery program and operational plan via adaptation plan
 - Asset management planning via risk register
- The IRCC grants encourage integration of Climate Change Adaptation activities into the IP&R framework



Local Strategic Planning Statements (LSPS)

- ❖ EP&A Act
- ❖ Regional NSW councils must have their LSPS in place by 1 July 2020
- ❖ The LSPS is a 20 year vision for the land use of an LGA underpinned by the Regional Plan which takes into account the context of local dynamics e.g. housing, industry, employment, heritage issues, etc.
- ❖ The LSPS will inform changes to the planning controls in council's Local Environmental Plan (LEP) and Development Control Plans (DCP) to achieve the priorities
- ❖ The LSPS must cover the local context and identify planning priorities, actions and implementation
- ❖ For more information refer to the Department of Planning and Environment website: <https://www.planning.nsw.gov.au>

Climate Risks & Opportunities for Snowy Valleys



1. The case for action
2. KNOW: Climate observations and projections
3. ASSESS: NSW government
4. ASSESS: Risks and opportunities for Snowy Valleys
5. **RESPOND: NSW Government support**

NSW Government Response

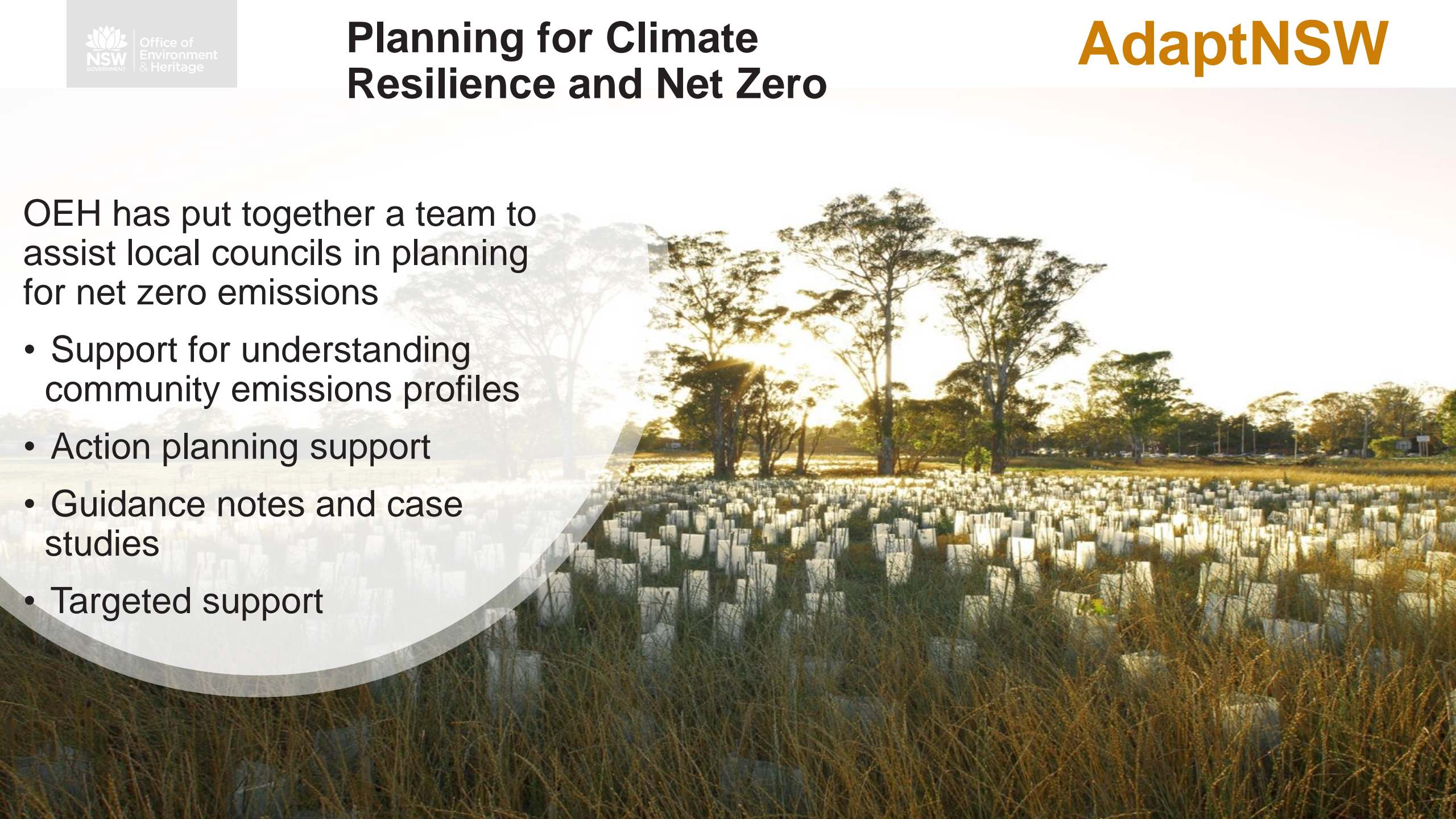
- In 2016 the NSW Government released the Climate Change Policy Framework that set two aspirational objectives:
 - Achieve net zero emissions by 2050
 - NSW is more resilient to a changing climate



Planning for Climate Resilience and Net Zero

OEH has put together a team to assist local councils in planning for net zero emissions

- Support for understanding community emissions profiles
- Action planning support
- Guidance notes and case studies
- Targeted support



SUPPORT TO ASSIST WITH RISK MANAGEMENT

- Updating Council's Climate Change Risk Assessments (CCRA)
- Funding support - IRCC grants to address climate risks
- Sustainable Advantage - CCRA consultant fee
- Statewide Mutual - offer to review existing CCRA

AdaptNSW



OFFICE OF ENVIRONMENT & HERITAGE

**Increasing Resilience to
Climate Change (IRCC) grants**

AdaptNSW



Key messages

- ❖ Climate impacts are being felt today and are increasing in frequency and severity
- ❖ A first step is for Councils to update Climate Change Risk Assessments
- ❖ Regional assistance is available from OEH
- ❖ We are looking forward to working with Councils and their communities under round 2 of IRCC grants program

Thank You.



Melinda Hillery

Senior Project Officer - South East and Tablelands /
Riverina Murray - Queanbeyan

Melinda.Hillery@environment.nsw.gov.au

